



ECHO

- [Terms & Conditions](#)
- [Options](#)
- [Panels](#)
- [Surfaces](#)
- [Accessories](#)

Echo Systems offers flexible and functional workstation designs suitable for nearly every office solution. Echo is a high-quality, environmentally friendly panel system built to last and backed by a lifetime warranty. Furthermore, Echo is OEM compatible with Haworth Unigroup panel systems. Echo can be used alone or added on to existing Echo or Haworth Unigroup workstations, making it extremely adaptive to changing needs. Echo offers a durable, sustainable furniture option at an affordable price. Echo can also contribute to LEED project qualification for those businesses seeking to minimize their environmental impact through sustainable buildings and furnishings.



RSI TERMS AND CONDITIONS

COMMON CARRIER SHIPMENT: ALL PRODUCTS ARE SOLD FROM OUR TEMPE, AZ OR NORCROSS, GA. LOCATION. WE WILL ARRANGE FREIGHT IF THE BUYER DOES NOT HAVE A DISCOUNT SCHEDULE WITH A PREFERRED FREIGHT COMPANY. WE WILL PREPAY THE FREIGHT AND BILL THE BUYER ACCORDING TO OUR STANDARD FREIGHT POLICY (SEE "RSI FREIGHT POLICY"); OTHERWISE, ALL SHIPMENTS WILL BE FREIGHT COLLECT. PLEASE STATE YOUR PREFERENCE AT THE TIME OF PLACING THE ORDER.

EXCLUSIVE SHIPPING PROCEDURES: THE ARRIVAL TIME FOR ANY SHIPMENT SENT VIA EXCLUSIVE CARRIER WILL BE GUARANTEED TO WITHIN A TWO-HOUR WINDOW OF THE REQUESTED TIME. LABOR WAITING TO UNLOAD AN EXCLUSIVE DIRECT TRUCK AT A JOB SITE WILL BE RE-IMBURSED AT A RATE OF \$28.00 PER MAN HOUR AND WILL ONLY BE CHARGED AFTER THIS TWO HOUR PERIOD IS SURPASSED. CLAIMS FOR PAYMENT FOR TECHNICIAN LABOR WAITING WILL NOT BE CONSIDERED UNTIL THIS 2 HOUR GRACE PERIOD IS EXCEEDED. NEITHER RSI NOR THE CARRIER WILL BE HELD RESPONSIBLE FOR TRUCKS THAT ARE DELAYED DUE TO ACTS OF PUBLIC AUTHORITY, MECHANICAL DIFFICULTIES, ILLNESS OR INCAPACITATION, WEATHER RELATED DELAYS, TRAFFIC ACCIDENT OR ROAD CONDITIONS CAUSING EXTRAORDINARY TRAFFIC DELAYS. EXCLUSIVE TRUCKS MUST BE UNLOADED WITHIN THREE HOURS OF ARRIVAL OR FREIGHT WAITING CHARGES MAY BE ASSESSED.

INSPECTION: (A) BUYER IS RESPONSIBLE TO HAVE QUALIFIED PERSONNEL AVAILABLE TO RECEIVE AND INSPECT THE GOODS. (B) ANY DAMAGE IN TRANSIT MUST BE NOTED ON THE BILL OF LADING TO ENABLE FILING AND COLLECTION OF CLAIM FROM THE CARRIER. FAILURE TO NOTE SHIPPING DAMAGE WILL RESULT IN THE DENIAL OF COMPENSATION BY THE CARRIER AND WILL BE THE RESPONSIBILITY OF THE BUYER TO PAY FOR REPLACEMENT GOODS. IT IS THE BUYER'S RESPONSIBILITY TO FILE ANY AND ALL DAMAGE/SHORTAGE CLAIMS WITH THE FREIGHT CARRIER; HOWEVER RSI WILL BE HAPPY TO ASSIST THE BUYER IN THIS PROCESS. (C) SHORTAGES MUST BE REPORTED TO RSI WITHIN 48 HOURS OF RECEIPT OF SHIPMENT OR THE BUYER WILL BE RESPONSIBLE FOR PAYMENT FOR REPLACEMENT GOODS.

ORDER CHANGES AND CANCELLATIONS: ANY CHANGES/CANCELLATIONS PRIOR TO FINAL PRODUCTION OF ORDER MUST BE SUBMITTED FOR APPROVAL. IF APPROVED, BUYER WILL BE HELD RESPONSIBLE FOR ALL LABOR AND MATERIAL COSTS INCURRED PRIOR TO THE CHANGE AND/OR CANCELLATION. CHANGES OR CANCELLATIONS AFTER FINAL PRODUCTION OF THE ORDER BUT PRIOR TO SHIPMENT FALL UNDER THE "RETURNS" SECTION BELOW. THERE IS NO FINANCIAL PENALTY FOR ADDITIONS TO ORDERS; HOWEVER, ANY CHANGE MAY CAUSE THE ORDER TO BE RESCHEDULED AND MAY EFFECT LEAD TIME.

TERMS: NEW BUYERS WILL BE REQUIRED TO ACCOMPANY ORDERS WITH A 50% DEPOSIT. IN ADDITION, ALL ORDERS IN EXCESS OF \$10,000 WILL REQUIRE A 50% DEPOSIT AND ORDERS FROM EXISTING BUYERS WHICH CAUSE THAT BUYER TO EXCEED THEIR CREDIT LIMIT WILL REQUIRE A DEPOSIT EQUAL TO THE AMOUNT BY WHICH THE NEW ORDER CAUSES THE BUYER'S BALANCE TO EXCEED THEIR CREDIT LIMIT. NO MATERIAL WILL BE ORDERED OR WORK PERFORMED ON AN ORDER UNTIL A WRITTEN PURCHASE ORDER AND THE REQUIRED DEPOSIT HAVE BEEN RECEIVED. THE INVOICE AMOUNT LESS ANY DEPOSIT IS DUE 30 DAYS FROM DATE OF INVOICE UNLESS OTHERWISE SPECIFIED. SALES WILL BE INVOICED UPON COMPLETION OF PRODUCTION. DELIVERY DELAYS REQUESTED BY THE BUYER WILL NOT ALTER THE 30-DAY PAYMENT TERMS.

PRICING: PRICES QUOTED WILL BE VALID FOR 30 DAYS FROM THE DATE OF QUOTATION.

FINANCING: FINANCE CHARGES WILL BE ASSESSED ON ALL ACCOUNT BALANCES OVER THIRTY (30) DAYS PAST THE DATE OF INVOICE AT A RATE OF 1-1/2% PER MONTH (18% PER ANNUM). RSI RESERVES THE RIGHT TO PROCEED WITH LEGAL ACTION OR TURN THE ACCOUNT OVER TO AN AGENCY FOR COLLECTION ON ANY ACCOUNT BALANCE PAST 60 DAYS FROM THE DATE OF INVOICE. WE WILL GIVE THE BUYER NOTICE PRIOR TO THIS ACTION SO THE BUYER MAY AVOID PAYING ANY LEGAL, COLLECTION OR HANDLING COSTS INCURRED IN RECOVERING THE MERCHANDISE OR COLLECTION OF THE DEBT (BUYER AGREES TO PAY ALL THESE COLLECTION COSTS INCLUDING REASONABLE ATTORNEY FEES).

RETURNS: ALL PRODUCTS ARE CUSTOM MANUFACTURED FOR THE BUYER. THE COMPANY MAINTAINS NO FINISHED GOODS INVENTORY. RETURN SHIPMENTS ARE NOT ACCEPTED UNLESS SPECIFICALLY AUTHORIZED BY THE COMPANY ON A RETURNED GOODS AUTHORIZATION FORM. IF THE COMPANY APPROVES A PRODUCT RETURN AND BUYER RETURNS THE GOODS AT ITS EXPENSE, BUYER WILL RECEIVE A CREDIT RANGING FROM 10% - 40% OF THE ORIGINAL SALE AMOUNT DEPENDENT UPON THE ITEMS RETURNED. MERCHANDISE MUST BE RECEIVED IN SALEABLE CONDITION. NO CREDIT WILL BE ISSUED FOR DAMAGED PRODUCTS. ALL RETURNS MUST BE MADE WITHIN 30 DAYS AFTER RETURN AUTHORIZATION IS ISSUED.

RSI TERMS AND CONDITIONS (Cont.)

ECHO SYSTEMS WARRANTY: ECHO SYSTEMS IS WARRANTED FOR MATERIAL AND WORKMANSHIP FOR LIFETIME TO ORIGINAL PURCHASER FOR ANY DEFECTS IN WORKMANSHIP AND/OR MATERIALS. THE PRODUCT MUST NOT EXCEED THE SUPPORT AND LOAD LIMITS AND OUR GUIDELINES AS OUTLINED BELOW. UL ELECTRICAL GUIDELINES FOR APPLICATION OF POWERED PANELS MUST BE STRICTLY ADHERED TO. WE RESERVE THE RIGHT TO INSPECT THE INSTALLATION AND PERFORM ANY OR ALL LABOR ON WARRANTY WORK. PRODUCT MISUSE, ABUSE, OR FAILURE TO ADHERE TO THE GUIDELINES OUTLINED WILL VOID ALL WARRANTIES IMPLIED OR EXPRESSED.

OTHER PRODUCT WARRANTY: ALL OTHER MANUFACTURERS' WILL BE WARRANTED BASED ON THE MANUFACTURER'S WARRANTIES.

NOTE: OUR PRODUCT IS REMANUFACTURED WHICH MAY INCLUDE REPLACEMENT OF MISSING OR DAMAGED PARTS; REPLACEMENT PARTS MAY NOT HAVE BEEN MANUFACTURED BY THE ORIGINAL EQUIPMENT MANUFACTURER, AND THEREFORE, MINOR COSMETIC DIFFERENCES ARE TO BE EXPECTED. ANY ITEMS WHICH ARE FUNCTIONALLY SOUND AND CONSISTENT IN QUALITY MUST BE ACCEPTABLE. OEM SPECS MAY BE ALTERED BY PAINTING INSTEAD OF APPLYING PLASTIC FINISH, ETC.

FURNITURE PERFORMANCE: PROPER USE AND LOADING OF THE FURNITURE IS REQUIRED FOR MAXIMUM PERFORMANCE AND LIFESPAN. ALL STORAGE ITEMS HAVE LOAD WEIGHT CAPACITIES. LOAD CAPACITIES AND PROPER LOADING TECHNIQUES ARE PROVIDED BELOW. STANDING OR SITTING ON WORKSURFACES WILL GENERALLY EXCEED LOAD CAPACITY, AND DAMAGE CAUSED AS A RESULT OF SITTING OR STANDING ON THE FURNITURE WILL NOT BE COVERED UNDER WARRANTY.

ELECTRICAL: THE ELECTRICAL SYSTEM IS AN 8-WIRE, 3-CIRCUIT SYSTEM. PROVIDED THAT THE BUILDING ELECTRICAL SUPPLY IS DISTRIBUTING 3 SEPARATE CIRCUITS TO EACH JUNCTION INTO THE PANEL SYSTEM, THE TOTAL AMPERAGE AVAILABLE PER JUNCTION WILL BE 60 AMPS (20 AMPS PER CIRCUIT). THE NATIONAL ELECTRICAL CODE (NEC) REQUIRES THAT CIRCUIT CAPACITY BE "DE-RATED" BY 20%. THEREFORE, TREAT CIRCUITS USED FOR CONTINUOUS LOADS AS IF THEY WERE RATED AT 16 AMPS FOR ECHO SYSTEMS PRODUCT, THE MAXIMUM NUMBER OF SIMPLEX OR DUPLEX RECEPTACLES PER CIRCUIT IS NOT TO EXCEED EIGHT. BALANCED AMPERAGE LOADING (INDIVIDUAL CIRCUITS MUST HAVE POWER DRAW WITHIN 15% OF THE DRAW OF THE OTHER TWO CIRCUITS) IS ESSENTIAL. APPLIANCES, SUCH AS LARGE COPIERS, COFFEE MACHINES, SPACE HEATERS, MICROWAVES, AND SOME PRINTERS REQUIRE MOST OF THE CURRENT AVAILABLE ON A 20 AMP CIRCUIT. THESE SUCH DEVICES MUST BE SUPPLIED WITH THEIR OWN RECEPTACLE DIRECTLY FROM THE BUILDING. THIS LEAVES THE CAPACITY OF THE FURNITURE CIRCUITS AVAILABLE FOR MORE DYNAMIC REQUIREMENTS OF THE OFFICE EQUIPMENT AND ELIMINATES THE POTENTIAL FOR CIRCUIT OVERLOAD AND POWER SHUT DOWN. SPECIFICATIONS FOR HARDWIRING JUNCTIONS WILL BE PROVIDED TO BUYER OR ELECTRICIAN UPON REQUEST. ANY ELECTRICAL CONNECTIONS NOT WITHIN THE SPECIFICATIONS CAN AFFECT THE PERFORMANCE OF THE ELECTRICAL SYSTEMS AND POSSIBLY VOID THE WARRANTY.

COMPONENT LOAD LIMITS:

ALL LOAD CAPACITIES ARE BASED ON PANEL MOUNTED COMPONENTS. THE USE OF WALL TRACKING CAN AFFECT THE LOAD CAPACITIES IF PROPER BACKING IS NOT SUPPLIED BEHIND DRY WALL. ALL WORKSURFACES HAVE A LOAD CAPACITY OF 200 LBS.

REGULAR AND DEEP STORAGE SHELVES HAVE THE FOLLOWING LOAD CAPACITY:

24", 30" & 36" wide shelves	100 lbs.
42" & 48" wide shelves	150 lbs.
60" wide shelves	175 lbs.

LOW SHELVES AND LATERAL FILES HAVE THE FOLLOWING LOAD CAPACITY:

24", 30" & 36" wide shelves	75 lbs.
42" & 48" wide shelves	100 lbs.
60" wide shelves	125 lbs.

RSI FREIGHT POLICY

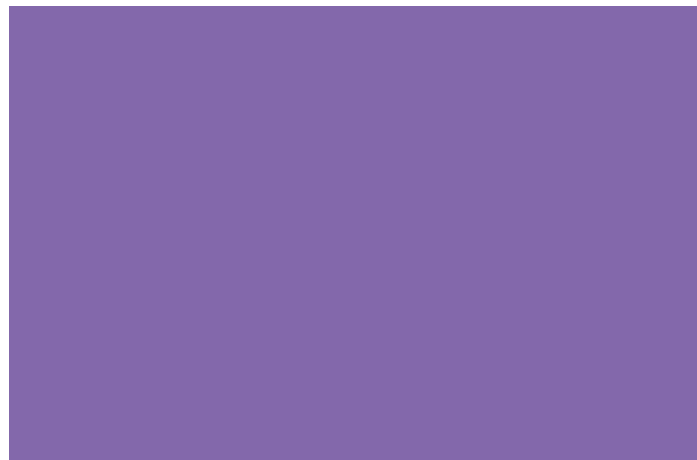
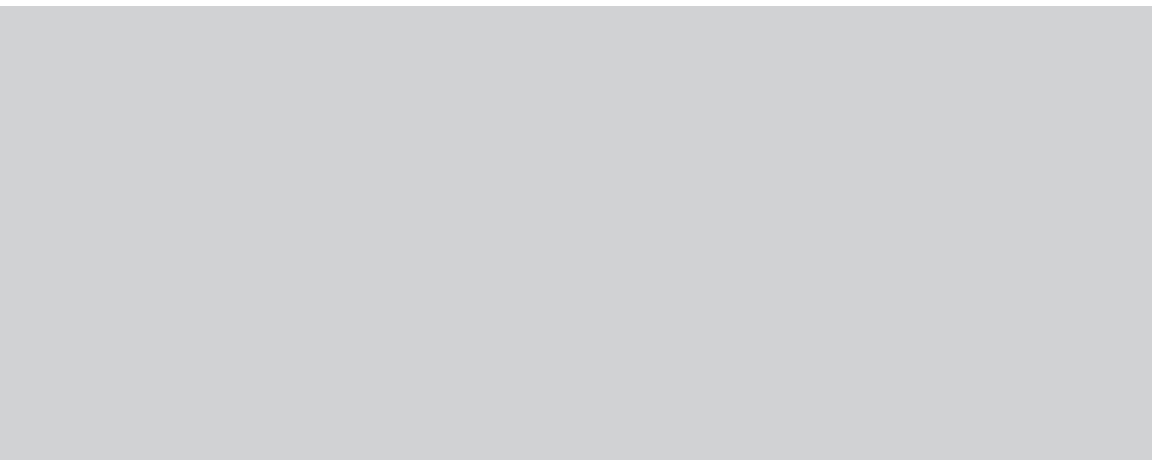


Zone	Total List	Price
Zone 1	\$0 - \$10,000	\$200.00
	\$10,001 - \$25,000	10% of Order (Net of Discount)
	\$25,001 - \$50,000	5% of Order (Net of Discount)
	\$50,001 +	Freight Free
Zone 2	\$0 - \$10,000	\$200.00
	\$10,001 - \$25,000	15% of Order (Net of Discount)
	\$25,001 - \$50,000	10% of Order (Net of Discount)
	\$50,001 - \$100,000	5% of Order (Net of Discount)
	\$100,000 +	Freight Free
Zone 3	Canada and New York City, NY	
	Call for Quote	



Options

Fabrics	1
Grade A	2
Grade B	2
Grade C	4
Grade D	5
Laminates	6
Grade A	6
Grade B	6
Paint	7
Trim/Molding	7

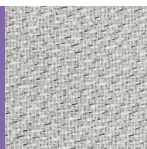




Echo Options



Echo Systems is available in over 125 fabrics, 27 laminates and 5 standard paint colors. We offer a standard rounded edge t-molding worksurface trim or 3 mm t-molding option. We partner with suppliers who use sustainable manufacturing techniques to minimize their impact on the environment. Many of our available fabric selections are manufactured using post-consumer materials, further enhancing Echo's green content.

Swatches in this brochure are an approximation of the pattern and/or color, but may deviate from the final product due to variation in monitor/printer calibration. Please contact us for a physical swatch for an accurate fabric/paint/trim sample.

Grade A						
Burch Century						
	Century Aspen 7176	Century Atlantic 7180	Century Oro 7182			
Burch Dayton						
	Dayton Cape May 7113	Dayton Newport 7117	Dayton Yellowstone 7118			
Burch Foundation						
	Foundation Taupe 7954	Foundation Sand 7959	Foundation Seagull 7961			
Burch Traction						
	Traction Wheat 7756	Traction Greystone 7758	Traction Chrome 7759			
Grade B						
Burch Collaborate						
	Collaborate Oyster 7056	Collaborate Latte 7057	Collaborate Linen 7059	Collaborate Moon Rock 7055	Collaborate Slate 7054	Collaborate Fawn 7058
Burch Alliance						
	Alliance Stardust 7221	Alliance Sterling 7220	Alliance Alloy 7119	Alliance Champagne 7218	Alliance Mica 7216	Alliance Taupe 7217
Burch Unison						
	Unison Ecu 7317	Unison Putty 7318	Unison Suede 7313	Unison Halo 7316	Unison Haze 7315	Unison Flint 7314

Swatches in this brochure are an approximation of the pattern and/or color, but may deviate from the final product due to variation in monitor/printer calibration. Please contact us for a physical swatch for an accurate fabric/paint/trim sample.

Grade B

Burch Century								
	Century Amber 7177	Century Dew 7178	Century Fossil 7179	Century Driftwood 7181	Century Limestone 7183			
Burch Chain Link								
	Chain Link Canvas 7420	Chain Link Natural 7421	Chain Link Cocoa 7422	Chain Link Colonial 7423	Chain Link Charcoal 7424	Chain Link Steel 7425		
Burch Midway								
	Midway Mineral 7237	Midway Almond 7238	Midway Wheat 7239	Midway Opal 7240	Midway Rye 7241	Midway Saddle 7242	Midway Oasis 7243	Midway Chambray 7244
Burch Midway								
	Midway Flint 7245	Midway Haze 7246						
Burch Traction								
	Traction Platinum 7245	Traction Jute 7245	Traction Earth 7245					

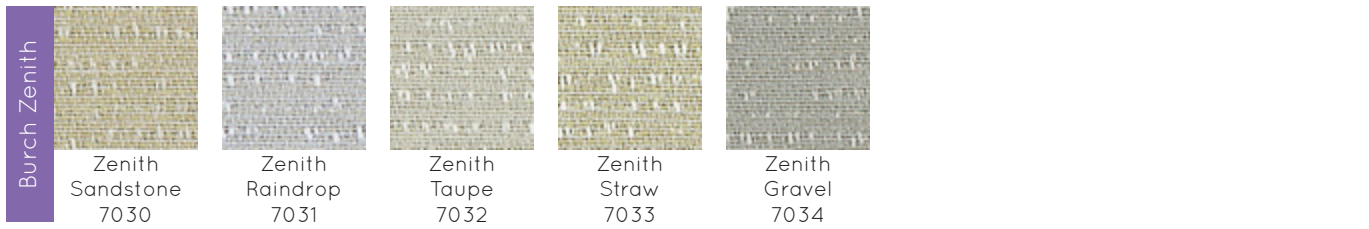
Swatches in this brochure are an approximation of the pattern and/or color, but may deviate from the final product due to variation in monitor/printer calibration. Please contact us for a physical swatch for an accurate fabric/paint/trim sample.

Grade C

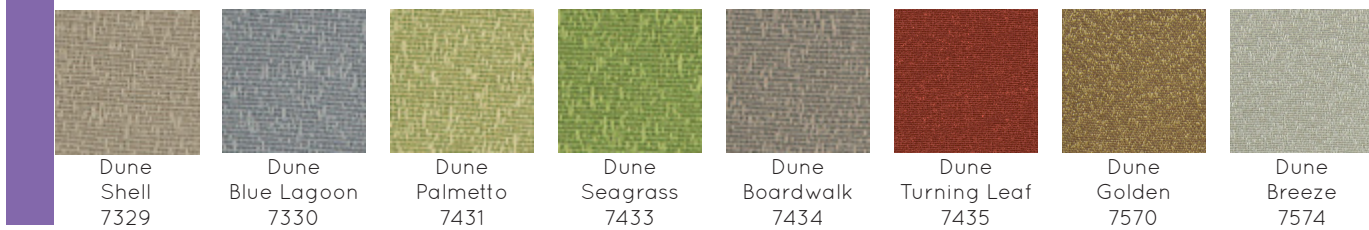
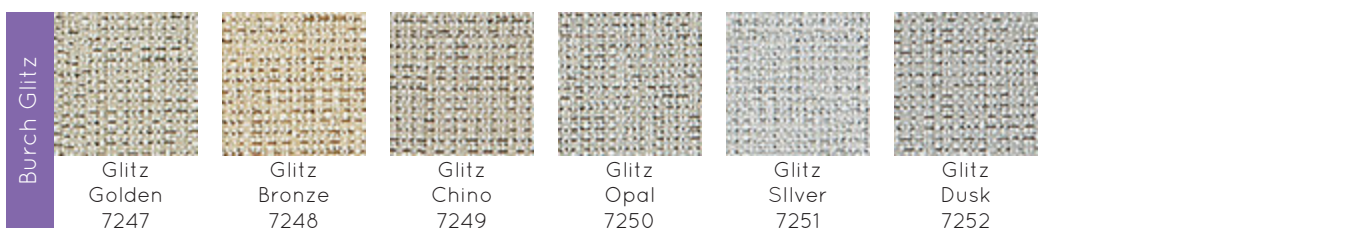
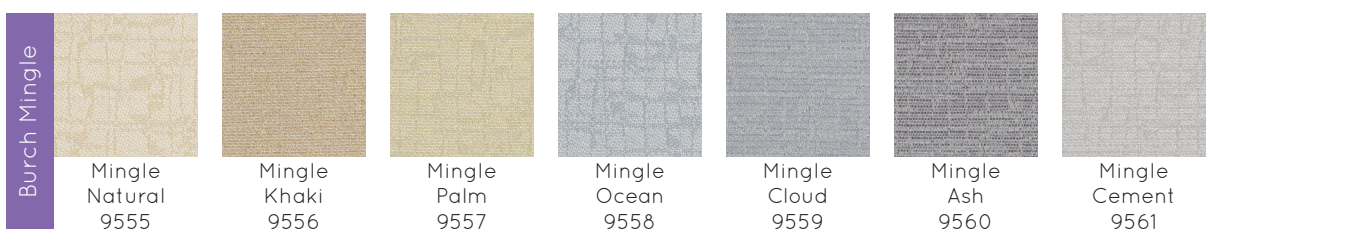
Burch Cycle								
	Cycle Putty 7724	Cycle Honey 7725	Cycle Graphite 7727	Cycle Cocoa 7726				
Burch Flip								
	Flip Beige 7794	Flip Khaki 7795	Flip Almond 7796	Flip Citrus 7797	Flip Mist 7798	Flip Cosmic 7799	Flip Spa 7800	
Burch Milkyway								
	Milkyway Egg Shell 7903	Milkyway Straw 7904	Milkyway Brindle 7905	Milkyway Sea Spray 7906				
Burch Pinpoint								
	Pinpoint Rain 7746	Pinpoint Mocha 7743	Pinpoint Mica 7740	Pinpoint Khaki 7741	Pinpoint Jute 7742	Pinpoint Charcoal 7747	Pinpoint Cement 7745	Pinpoint Bonsai 7748
Burch Pinpoint								
	Pinpoint Bone 7739	Pinpoint Barley 7744						
Burch Scatter								
	Scatter Parchment 7780	Scatter Taupe 7781	Scatter Natural 7782	Scatter Brass 7783	Scatter Rain 7784	Scatter Stone 7785	Scatter Silver 7786	
Burch Spin								
	Spin Fern 7787	Spin Barley 7788	Spin Graphite 7789	Spin Ivory 7790	Spin Honey 7791	Spin Fog 7792	Spin Ocean 7793	

Swatches in this brochure are an approximation of the pattern and/or color, but may deviate from the final product due to variation in monitor/printer calibration. Please contact us for a physical swatch for an accurate fabric/paint/trim sample.

Grade C

Starburst
Creme Brulee
7907Starburst
Whitecap
7908Starburst
Wheat
7909Starburst
Seneca
7910Starburst
Taupe
7911Starburst
Mica
7912Starburst
Cosmic
7913Starburst
Depth
7914Zenith
Sandstone
7030Zenith
Raindrop
7031Zenith
Taupe
7032Zenith
Straw
7033Zenith
Gravel
7034

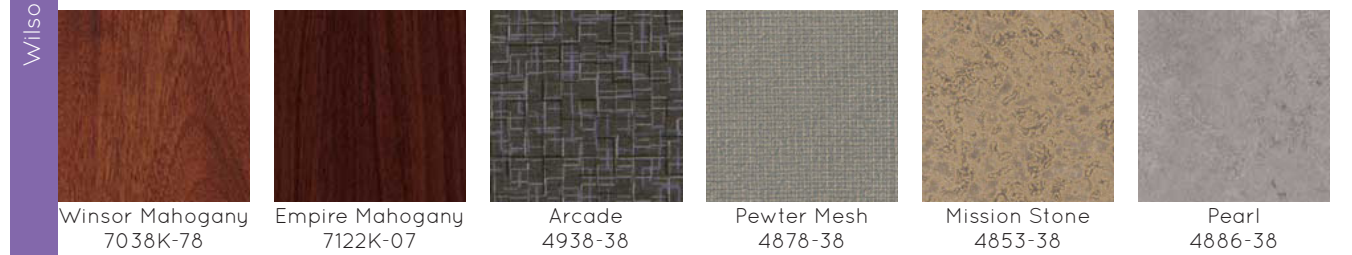
Grade D

Dune
Drift
7330Dune
Erosion
7331Dune
Haze
7332Dune
Kamelos
7333Dune
Clear Sky
7336Dune
Hot Sun
7338Dune
Basin
7339Dune
Windblown
7342Dune
Gecho
7343Dune
Nectar
7344Dune
Raven
7346Dune
Deep Night
7347Dune
Darkness
7348Dune
Caribbean
7426Dune
Sandbar
7427Dune
Cloudburst
7428Dune
Shell
7329Dune
Blue Lagoon
7330Dune
Palmetto
7431Dune
Seagrass
7433Dune
Boardwalk
7434Dune
Turning Leaf
7435Dune
Golden
7570Dune
Breeze
7574Glitz
Golden
7247Glitz
Bronze
7248Glitz
Chino
7249Glitz
Opal
7250Glitz
Silver
7251Glitz
Dusk
7252Mingle
Natural
9555Mingle
Khaki
9556Mingle
Palm
9557Mingle
Ocean
9558Mingle
Cloud
9559Mingle
Ash
9560Mingle
Cement
9561

Grade A Laminate

Wild Cherry
7054-60Fusion Maple
7909-60Pebble
D337-60Dove Grey
D92-60Studio Teak
7960K-18Frosty White
1573-60Black
1595-60Cocobala
7942K-07White Nebula
4621-60

Grade B Laminate

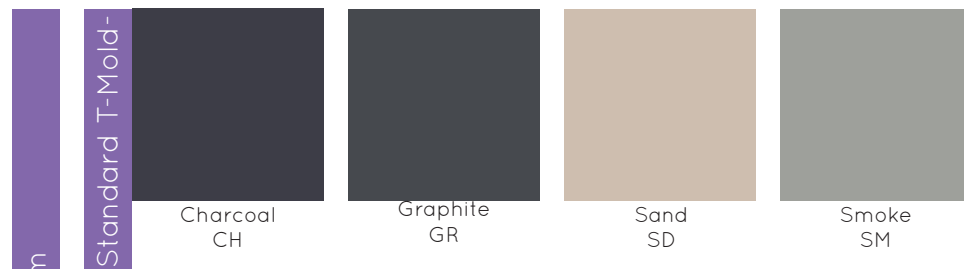
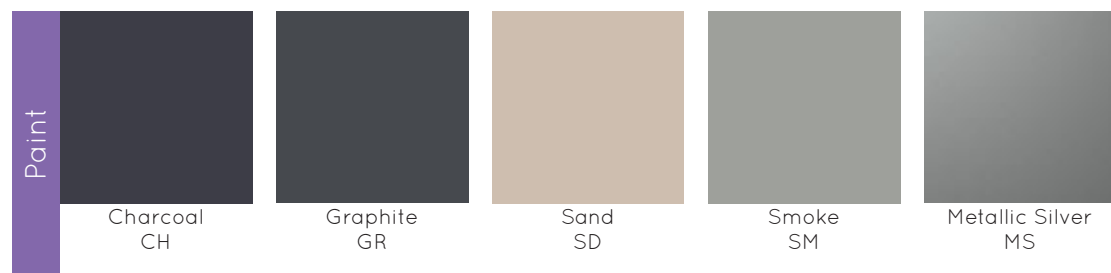
Almond Leather
2932-60Nickel EV
4813-60Bronze Legacy
4656-60Desert Zephyr
4841-60Fashion Grey
D381-60Kensington Maple
10776-60Winsor Mahogany
7038K-78Empire Mahogany
7122K-07Arcade
4938-38Pewter Mesh
4878-38Mission Stone
4853-38Pearl
4886-38

Grade B Laminate

Beigewood
7850-60Western Suede
4871-60Windswept Bronze
4794-60Twilight Zephyr
4845-60Casual Linen
4944-38Pewter Brush
4779-60Designer White
D354-60Oiled Soapstone
4882-38

Swatches in this brochure are an approximation of the pattern and/or color, but may deviate from the final product due to variation in monitor/printer calibration. Please contact us for a physical swatch for an accurate fabric/paint/trim sample.

Swatches in this brochure are an approximation of the pattern and/or color, but may deviate from the final product due to variation in monitor/printer calibration. Please contact us for a physical swatch for an accurate fabric/paint/trim sample.



Swatches in this brochure are an approximation of the pattern and/or color, but may deviate from the final product due to variation in monitor/printer calibration. Please contact us for a physical swatch for an accurate fabric/paint/trim sample.



Panels

Panels	1
Fabric, Non-Powered	2
Fabric, Powered	4
Fabric/Plexi, Non-Powered	6
Fabric/Plexi, Powered	6
Plexiglass, Non-Powered	7
Plexiglass, Powered	7
Doors	8
Framed Door	8
Sliding Door	9
Add-On Panels	9
Plexiglass	9
Double Plexiglass	11
Fabric or Laminate	12
Double Fabric or Laminate	14
Double Fab/Lam/Plexi	15
Frameless Glass	16
Panel Accessories	12
Mount Kits	17
Finish Posts	18
Wainscot Kits	19
Marker Boards	19
Communication Poles	19
Base Trim Parts	19
Wire Management	20
Electrical	20
Receptacles	20
Feeds	21
Connectors	21

Echo Systems has many available panel, door and add-on options. Panels are offered in acoustical and plexiglass options and can be specified as non-powered or ordered with a 3-circuit powered option. Add-on panels can enhance the look and functionality of the system with options for plexiglass, laminate or fabric inserts. A full line of panel accessories can be added such as finish posts, cable management, and wainscot kits.



Echo Panels



Echo Systems Acoustical Panels are fabric-covered monolithic panels over a recycled steel core. Top caps, side rails and base covers are in trim colors. Panels may be ordered with a 3-circuit powered option. Each panel includes all connection hinges required for assembly. Note: Duplex outlets, electrical jumpers and end of run caps are specified separately. See "Electrical" and "Panel Accessories."



Fabric Acoustical Panels

To Order, Specify:

- 1) Product Number
- 2) Fabric Color*
- 3) Paint Color*

Fabric Grade Pricing

Grade A:	No Upcharge
Grade B:	+ 10%
Grade C:	+ 20%
Grade D:	+ 30%
COM:	- 10%

Fabric Acoustical Panel 30" High - No Power

Catalog#	Description	Price
EC-EFN-130	PANEL, ACOUSTICAL, 30" H x 12" W	\$375
EC-EFN-1830	PANEL, ACOUSTICAL, 30" H x 12" W	\$375
EC-EFN-230	PANEL, ACOUSTICAL, 30" H x 24" W	\$375
EC-EFN-3030	PANEL, ACOUSTICAL, 30" H x 30" W	\$450
EC-EFN-330	PANEL, ACOUSTICAL, 30" H x 36" W	\$575
EC-EFN-4230	PANEL, ACOUSTICAL, 30" H x 42" W	\$600
EC-EFN-430	PANEL, ACOUSTICAL, 30" H x 48" W	\$575
EC-EFN-530	PANEL, ACOUSTICAL, 30" H x 60" W	\$575

Fabric Acoustical Panel 37" High - No Power

Catalog#	Description	Price
EC-EFN-137	PANEL, ACOUSTICAL, 37" H x 12" W	\$375
EC-EFN-1837	PANEL, ACOUSTICAL, 37" H x 18" W	\$375
EC-EFN-237	PANEL, ACOUSTICAL, 37" H x 24" W	\$375
EC-EFN-3037	PANEL, ACOUSTICAL, 37" H x 30" W	\$450
EC-EFN-337	PANEL, ACOUSTICAL, 37" H x 36" W	\$575
EC-EFN-4237	PANEL, ACOUSTICAL, 37" H x 42" W	\$600
EC-EFN-437	PANEL, ACOUSTICAL, 37" H x 48" W	\$575
EC-EFN-537	PANEL, ACOUSTICAL, 37" H x 60" W	\$575

Fabric Acoustical Panel 44" High - No Power

Catalog#	Description	Price
EC-EFN-144	PANEL, ACOUSTICAL, 44" H x 12" W	\$300
EC-EFN-1844	PANEL, ACOUSTICAL, 44" H x 18" W	\$300
EC-EFN-244	PANEL, ACOUSTICAL, 44" H x 24" W	\$300
EC-EFN-3044	PANEL, ACOUSTICAL, 44" H x 30" W	\$400
EC-EFN-344	PANEL, ACOUSTICAL, 44" H x 36" W	\$525
EC-EFN-4244	PANEL, ACOUSTICAL, 44" H x 42" W	\$575
EC-EFN-444	PANEL, ACOUSTICAL, 44" H x 48" W	\$525
EC-EFN-544	PANEL, ACOUSTICAL, 44" H x 60" W	\$525

Fabric Acoustical Panel 50" High - No Power

Catalog#	Description	Price
EC-EFN-150	PANEL, ACOUSTICAL, 50" H x 12" W	\$350
EC-EFN-1850	PANEL, ACOUSTICAL, 50" H x 18" W	\$350
EC-EFN-250	PANEL, ACOUSTICAL, 50" H x 24" W	\$350
EC-EFN-3050	PANEL, ACOUSTICAL, 50" H x 30" W	\$450
EC-EFN-350	PANEL, ACOUSTICAL, 50" H x 36" W	\$575
EC-EFN-4250	PANEL, ACOUSTICAL, 50" H x 42" W	\$625
EC-EFN-450	PANEL, ACOUSTICAL, 50" H x 48" W	\$575
EC-EFN-550	PANEL, ACOUSTICAL, 50" H x 60" W	\$575

To Order Specify:

- 1) Product Number
- 2) Fabric Color*
- 3) Paint Color*

Fabric Grade Pricing

Grade A:	No Upcharge	Grade D:	+ 30%
Grade B:	+ 10%	COM:	- 10%
Grade C:	+ 20%		

*Swatches in this brochure are an approximation of the pattern and/or color, but may deviate from the final product due to variation in monitor/printer calibration. Please contact us for a physical swatch for an accurate fabric/paint/trim sample.



Catalog#	Description	Price
EC-EFN-156	PANEL, ACOUSTICAL, 56" H x 12" W	\$400
EC-EFN-1856	PANEL, ACOUSTICAL, 56" H x 18" W	\$400
EC-EFN-256	PANEL, ACOUSTICAL, 56" H x 24" W	\$400
EC-EFN-3056	PANEL, ACOUSTICAL, 56" H x 30" W	\$500
EC-EFN-356	PANEL, ACOUSTICAL, 56" H x 36" W	\$625
EC-EFN-4256	PANEL, ACOUSTICAL, 56" H x 42" W	\$650
EC-EFN-456	PANEL, ACOUSTICAL, 56" H x 48" W	\$625
EC-EFN-556	PANEL, ACOUSTICAL, 56" H x 60" W	\$625

Catalog#	Description	Price
EC-EFN-164	PANEL, ACOUSTICAL, 64" H x 12" W	\$325
EC-EFN-1864	PANEL, ACOUSTICAL, 64" H x 18" W	\$325
EC-EFN-264	PANEL, ACOUSTICAL, 64" H x 24" W	\$325
EC-EFN-3064	PANEL, ACOUSTICAL, 64" H x 30" W	\$425
EC-EFN-364	PANEL, ACOUSTICAL, 64" H x 36" W	\$550
EC-EFN-4264	PANEL, ACOUSTICAL, 64" H x 42" W	\$625
EC-EFN-464	PANEL, ACOUSTICAL, 64" H x 48" W	\$550
EC-EFN-564	PANEL, ACOUSTICAL, 64" H x 60" W	\$550

Catalog#	Description	Price
EC-EFN-168	PANEL, ACOUSTICAL, 68" H x 12" W	\$325
EC-EFN-1868	PANEL, ACOUSTICAL, 68" H x 18" W	\$325
EC-EFN-268	PANEL, ACOUSTICAL, 68" H x 24" W	\$325
EC-EFN-3068	PANEL, ACOUSTICAL, 68" H x 30" W	\$500
EC-EFN-368	PANEL, ACOUSTICAL, 68" H x 36" W	\$625
EC-EFN-4268	PANEL, ACOUSTICAL, 68" H x 42" W	\$675
EC-EFN-468	PANEL, ACOUSTICAL, 68" H x 48" W	\$625
EC-EFN-568	PANEL, ACOUSTICAL, 68" H x 60" W	\$625

Catalog#	Description	Price
EC-EFN-182	PANEL, ACOUSTICAL, 82" H x 12" W	\$500
EC-EFN-1882	PANEL, ACOUSTICAL, 82" H x 18" W	\$600
EC-EFN-282	PANEL, ACOUSTICAL, 82" H x 24" W	\$625
EC-EFN-3082	PANEL, ACOUSTICAL, 82" H x 30" W	\$725
EC-EFN-382	PANEL, ACOUSTICAL, 82" H x 36" W	\$800
EC-EFN-4282	PANEL, ACOUSTICAL, 82" H x 42" W	\$850
EC-EFN-482	PANEL, ACOUSTICAL, 82" H x 48" W	\$875
EC-EFN-582	PANEL, ACOUSTICAL, 82" H x 60" W	\$1,000



Catalog#	Description	Price
EC-EFP-130	PANEL, ACOUSTICAL, 30" H x 12" W	\$475
EC-EFP-1830	PANEL, ACOUSTICAL, 30" H x 18" W	\$475
EC-EFP-230	PANEL, ACOUSTICAL, 30" H x 24" W	\$425
EC-EFP-3030	PANEL, ACOUSTICAL, 30" H x 30" W	\$500
EC-EFP-330	PANEL, ACOUSTICAL, 30" H x 36" W	\$675
EC-EFP-4230	PANEL, ACOUSTICAL, 30" H x 42" W	\$700
EC-EFP-430	PANEL, ACOUSTICAL, 30" H x 48" W	\$675
EC-EFP-530	PANEL, ACOUSTICAL, 30" H x 60" W	\$675

Catalog#	Description	Price
EC-EFP-137	PANEL, ACOUSTICAL, 37" H x 12" W	\$475
EC-EFP-1837	PANEL, ACOUSTICAL, 37" H x 18" W	\$475
EC-EFP-237	PANEL, ACOUSTICAL, 37" H x 24" W	\$425
EC-EFP-3037	PANEL, ACOUSTICAL, 37" H x 30" W	\$500
EC-EFP-337	PANEL, ACOUSTICAL, 37" H x 36" W	\$675
EC-EFP-4237	PANEL, ACOUSTICAL, 37" H x 42" W	\$700
EC-EFP-437	PANEL, ACOUSTICAL, 37" H x 48" W	\$675
EC-EFP-537	PANEL, ACOUSTICAL, 37" H x 60" W	\$675

Catalog#	Description	Price
EC-EFP-144	PANEL, ACOUSTICAL, 44" H x 12" W	\$400
EC-EFP-1844	PANEL, ACOUSTICAL, 44" H x 18" W	\$400
EC-EFP-244	PANEL, ACOUSTICAL, 44" H x 24" W	\$350
EC-EFP-3044	PANEL, ACOUSTICAL, 44" H x 30" W	\$450
EC-EFP-344	PANEL, ACOUSTICAL, 44" H x 36" W	\$625
EC-EFP-4244	PANEL, ACOUSTICAL, 44" H x 42" W	\$675
EC-EFP-444	PANEL, ACOUSTICAL, 44" H x 48" W	\$625
EC-EFP-544	PANEL, ACOUSTICAL, 44" H x 60" W	\$625

Catalog#	Description	Price
EC-EFP-150	PANEL, ACOUSTICAL, 50" H x 12" W	\$450
EC-EFP-1850	PANEL, ACOUSTICAL, 50" H x 18" W	\$450
EC-EFP-250	PANEL, ACOUSTICAL, 50" H x 24" W	\$400
EC-EFP-3050	PANEL, ACOUSTICAL, 50" H x 30" W	\$500
EC-EFP-350	PANEL, ACOUSTICAL, 50" H x 36" W	\$675
EC-EFP-4250	PANEL, ACOUSTICAL, 50" H x 42" W	\$725
EC-EFP-450	PANEL, ACOUSTICAL, 50" H x 48" W	\$675
EC-EFP-550	PANEL, ACOUSTICAL, 50" H x 60" W	\$675



To Order Specify:	Fabric Grade Pricing		
1) Product Number	Grade A:	No Upcharge	Grade D: + 30%
2) Fabric Color*	Grade B:	+ 10%	COM: - 10%
3) Paint Color*	Grade C:	+ 20%	

*Swatches in this brochure are an approximation of the pattern and/or color, but may deviate from the final product due to variation in monitor/printer calibration. Please contact us for a physical swatch for an accurate fabric/paint/trim sample.

To Order Specify:	Fabric Grade Pricing		
1) Product Number	Grade A:	No Upcharge	Grade D: + 30%
2) Fabric Color*	Grade B:	+ 10%	COM: - 10%
3) Paint Color*	Grade C:	+ 20%	

*Swatches in this brochure are an approximation of the pattern and/or color, but may deviate from the final product due to variation in monitor/printer calibration. Please contact us for a physical swatch for an accurate fabric/paint/trim sample.

Catalog#	Description	Price
EC-EFP-156	PANEL, ACOUSTICAL, 56" H x 12" W	\$500
EC-EFP-1856	PANEL, ACOUSTICAL, 56" H x 18" W	\$500
EC-EFP-256	PANEL, ACOUSTICAL, 56" H x 24" W	\$450
EC-EFP-3056	PANEL, ACOUSTICAL, 56" H x 30" W	\$550
EC-EFP-356	PANEL, ACOUSTICAL, 56" H x 36" W	\$725
EC-EFP-4256	PANEL, ACOUSTICAL, 56" H x 42" W	\$750
EC-EFP-456	PANEL, ACOUSTICAL, 56" H x 48" W	\$725
EC-EFP-556	PANEL, ACOUSTICAL, 56" H x 60" W	\$725

Catalog#	Description	Price
EC-EFP-164	PANEL, ACOUSTICAL, 64" H x 12" W	\$425
EC-EFP-1864	PANEL, ACOUSTICAL, 64" H x 18" W	\$425
EC-EFP-264	PANEL, ACOUSTICAL, 64" H x 24" W	\$375
EC-EFP-3064	PANEL, ACOUSTICAL, 64" H x 30" W	\$475
EC-EFP-364	PANEL, ACOUSTICAL, 64" H x 36" W	\$650
EC-EFP-4264	PANEL, ACOUSTICAL, 64" H x 42" W	\$725
EC-EFP-464	PANEL, ACOUSTICAL, 64" H x 48" W	\$650
EC-EFP-564	PANEL, ACOUSTICAL, 64" H x 60" W	\$650

Catalog#	Description	Price
EC-EFP-168	PANEL, ACOUSTICAL, 68" H x 12" W	\$425
EC-EFP-1868	PANEL, ACOUSTICAL, 68" H x 18" W	\$425
EC-EFP-268	PANEL, ACOUSTICAL, 68" H x 24" W	\$375
EC-EFP-3068	PANEL, ACOUSTICAL, 68" H x 30" W	\$550
EC-EFP-368	PANEL, ACOUSTICAL, 68" H x 36" W	\$725
EC-EFP-4268	PANEL, ACOUSTICAL, 68" H x 42" W	\$775
EC-EFP-468	PANEL, ACOUSTICAL, 68" H x 48" W	\$725
EC-EFP-568	PANEL, ACOUSTICAL, 68" H x 60" W	\$725

Catalog#	Description	Price
EC-EFP-182	PANEL, ACOUSTICAL, 82" H x 12" W	\$600
EC-EFP-1882	PANEL, ACOUSTICAL, 82" H x 18" W	\$700
EC-EFP-282	PANEL, ACOUSTICAL, 82" H x 24" W	\$675
EC-EFP-3082	PANEL, ACOUSTICAL, 82" H x 30" W	\$775
EC-EFP-382	PANEL, ACOUSTICAL, 82" H x 36" W	\$900
EC-EFP-4282	PANEL, ACOUSTICAL, 82" H x 42" W	\$950
EC-EFP-482	PANEL, ACOUSTICAL, 82" H x 48" W	\$975
EC-EFP-582	PANEL, ACOUSTICAL, 82" H x 60" W	\$1,100



Catalog#	Description	Price
EC-EFN-GLAO-13764	37" PANEL, ACOUSTICAL W/ 27" PLEXI, 64" H x 12" W	\$1540
EC-EFN-GLAO-183764	37" PANEL, ACOUSTICAL W/ 27" PLEXI, 64" H x 18" W	\$1540
EC-EFN-GLAO-23764	37" PANEL, ACOUSTICAL W/ 27" PLEXI, 64" H x 24" W	\$1540
EC-EFN-GLAO-303764	37" PANEL, ACOUSTICAL W/ 27" PLEXI, 64" H x 30" W	\$1595
EC-EFN-GLAO-33764	37" PANEL, ACOUSTICAL W/ 27" PLEXI, 64" H x 36" W	\$1700
EC-EFN-GLAO-423764	37" PANEL, ACOUSTICAL W/ 27" PLEXI, 64" H x 42" W	\$1830
EC-EFN-GLAO-43764	37" PANEL, ACOUSTICAL W/ 27" PLEXI, 64" H x 48" W	\$1865
EC-EFN-GLAO-53764	37" PANEL, ACOUSTICAL W/ 27" PLEXI, 64" H x 60" W	\$2270

Catalog#	Description	Price
EC-EFP-GLAO-13764	37" PANEL, ACOUSTICAL W/ 27" PLEXI, 64" H x 12" W	\$1620
EC-EFP-GLAO-183764	37" PANEL, ACOUSTICAL W/ 27" PLEXI, 64" H x 18" W	\$1620
EC-EFP-GLAO-23764	37" PANEL, ACOUSTICAL W/ 27" PLEXI, 64" H x 24" W	\$1620
EC-EFP-GLAO-303764	37" PANEL, ACOUSTICAL W/ 27" PLEXI, 64" H x 30" W	\$1675
EC-EFP-GLAO-33764	37" PANEL, ACOUSTICAL W/ 27" PLEXI, 64" H x 36" W	\$1835
EC-EFP-GLAO-423764	37" PANEL, ACOUSTICAL W/ 27" PLEXI, 64" H x 42" W	\$1970
EC-EFP-GLAO-43764	37" PANEL, ACOUSTICAL W/ 27" PLEXI, 64" H x 48" W	\$2045
EC-EFP-GLAO-53764	37" PANEL, ACOUSTICAL W/ 27" PLEXI, 64" H x 60" W	\$2400

Catalog#	Description	Price
EC-EFN-GLAO-13782	37" PANEL, ACOUSTICAL W/ 45" PLEXI, 82" H x 12" W	\$1565
EC-EFN-GLAO-183782	37" PANEL, ACOUSTICAL W/ 45" PLEXI, 82" H x 18" W	\$1565
EC-EFN-GLAO-23782	37" PANEL, ACOUSTICAL W/ 45" PLEXI, 82" H x 24" W	\$1565
EC-EFN-GLAO-303782	37" PANEL, ACOUSTICAL W/ 45" PLEXI, 82" H x 30" W	\$1705
EC-EFN-GLAO-33782	37" PANEL, ACOUSTICAL W/ 45" PLEXI, 82" H x 36" W	\$1835
EC-EFN-GLAO-423782	37" PANEL, ACOUSTICAL W/ 45" PLEXI, 82" H x 42" W	\$2045
EC-EFN-GLAO-43782	37" PANEL, ACOUSTICAL W/ 45" PLEXI, 82" H x 48" W	\$2185
EC-EFN-GLAO-53782	37" PANEL, ACOUSTICAL W/ 45" PLEXI, 82" H x 60" W	\$2410

Catalog#	Description	Price
EC-EFP-GLAO-13782	37" PANEL, ACOUSTICAL W/ 45" PLEXI, 82" H x 12" W	\$1760
EC-EFP-GLAO-183782	37" PANEL, ACOUSTICAL W/ 45" PLEXI, 82" H x 18" W	\$1760
EC-EFP-GLAO-23782	37" PANEL, ACOUSTICAL W/ 45" PLEXI, 82" H x 24" W	\$1760
EC-EFP-GLAO-303782	37" PANEL, ACOUSTICAL W/ 45" PLEXI, 82" H x 30" W	\$1915
EC-EFP-GLAO-33782	37" PANEL, ACOUSTICAL W/ 45" PLEXI, 82" H x 36" W	\$2060
EC-EFP-GLAO-423782	37" PANEL, ACOUSTICAL W/ 45" PLEXI, 82" H x 42" W	\$2270
EC-EFP-GLAO-43782	37" PANEL, ACOUSTICAL W/ 45" PLEXI, 82" H x 48" W	\$2425
EC-EFP-GLAO-53782	37" PANEL, ACOUSTICAL W/ 45" PLEXI, 82" H x 60" W	\$2720



To Order Specify:

- 1) Product Number
- 2) Fabric Color*
- 3) Paint Color*

Fabric Grade Pricing

Grade A:	No Upcharge	Grade D:	+ 30%
Grade B:	+ 10%	COM:	- 10%
Grade C:	+ 20%		

*Swatches in this brochure are an approximation of the pattern and/or color, but may deviate from the final product due to variation in monitor/printer calibration. Please contact us for a physical swatch for an accurate fabric/paint/trim sample.

To Order Specify:

- 1) Product Number
- 2) Fabric Color*
- 3) Paint Color*

Fabric Grade Pricing

Grade A:	No Upcharge	Grade D:	+ 30%
Grade B:	+ 10%	COM:	- 10%
Grade C:	+ 20%		

*Swatches in this brochure are an approximation of the pattern and/or color, but may deviate from the final product due to variation in monitor/printer calibration. Please contact us for a physical swatch for an accurate fabric/paint/trim sample.

Plexiglas Panel
64" High - No Power

Catalog#	Description	Clear
EC-EGN-164	PANEL, PLEXIGLAS, 64" H x 12" W	\$775
EC-EGN-264	PANEL, PLEXIGLAS, 64" H x 24" W	\$1,105
EC-EGN-3064	PANEL, PLEXIGLAS, 64" H x 30" W	\$1,130
EC-EGN-364	PANEL, PLEXIGLAS, 64" H x 36" W	\$1,215

Plexiglas Panel
68" High - No Power

Catalog#	Description	Clear
EC-EGN-168	PANEL, PLEXIGLAS, 68" H x 12" W	\$790
EC-EGN-268	PANEL, PLEXIGLAS, 68" H x 24" W	\$1,125
EC-EGN-3068	PANEL, PLEXIGLAS, 68" H x 30" W	\$1,145
EC-EGN-368	PANEL, PLEXIGLAS, 68" H x 36" W	\$1,230

Plexiglas Panel
64" High - Power

Catalog#	Description	Clear
EC-EGP-164	PANEL, PLEXIGLAS, 64" H x 12" W	\$860
EC-EGP-264	PANEL, PLEXIGLAS, 64" H x 24" W	\$1,185
EC-EGP-3064	PANEL, PLEXIGLAS, 64" H x 30" W	\$1,210
EC-EGP-364	PANEL, PLEXIGLAS, 64" H x 36" W	\$1,350

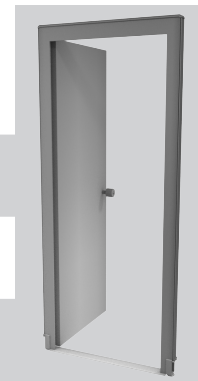
Plexiglas Panel
68" High - Power

Catalog#	Description	Clear
EC-EGP-168	PANEL, PLEXIGLAS, 68" H x 12" W	\$910
EC-EGP-268	PANEL, PLEXIGLAS, 68" H x 24" W	\$1,200
EC-EGP-3068	PANEL, PLEXIGLAS, 68" H x 30" W	\$1,225
EC-EGP-368	PANEL, PLEXIGLAS, 68" H x 36" W	\$1,365



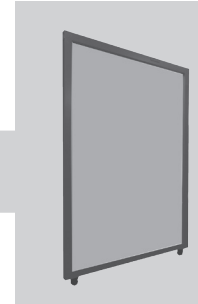
Single Door, Laminate
82" High

Catalog#	Description	Price
EC-EDS-382-BKL	DOOR, LAMINATE, 82" H x 36" W, LEFT-HAND SWING	\$1,460
EC-EDS-382-BKR	DOOR, LAMINATE, 82" H x 36" W, RIGHT-HAND SWING	\$1,460
EC-EDS-4282-BKL	DOOR, LAMINATE, 82" H x 42" W, LEFT-HAND SWING	\$1,550
EC-EDS-4282-BKR	DOOR, LAMINATE, 82" H x 42" W, RIGHT-HAND SWING	\$1,550



Plexiglas Sliding Door

Catalog#	Description	Price
EC-GLAO-464-DOOR	DOOR, SLIDING FROSTED PLEXIGLAS, 64" H x 48" W	\$1,525
EC-GLAO-468-DOOR	DOOR, SLIDING FROSTED PLEXIGLAS, 68" H x 48" W	\$1,565
EC-GLAO-482-DOOR	DOOR, SLIDING FROSTED PLEXIGLAS, 82" H x 48" W	\$1,780



To Order Specify:
1) Product Number
2) Plexiglas Color*
3) Paint Color*

Plexi Grade Pricing
Clear: No Upcharge
Frosted: + 20%

To Order Specify:
1) Product Number
2) Plexiglas Color*
3) Paint Color*

Plexi Grade Pricing
Clear: No Upcharge
Frosted: + 20% **
** Does not apply to Sliding Door

Paint Grade Pricing
Grade-A No Upcharge
Grade-B + 50%

*Swatches in this brochure are an approximation of the pattern and/or color, but may deviate from the final product due to variation in monitor/printer calibration. Please contact us for a physical swatch for an accurate fabric/paint/trim sample.

*Swatches in this brochure are an approximation of the pattern and/or color, but may deviate from the final product due to variation in monitor/printer calibration. Please contact us for a physical swatch for an accurate fabric/paint/trim sample.

Plexiglas Add-on Panel - 12" High

Catalog#	Description	Clear
EC-GLAO-212	PLEXIGLAS ADD-ON, 12"H x 24"W	\$300
EC-GLAO-3012	PLEXIGLAS ADD-ON, 12"H x 30"W	\$325
EC-GLAO-312	PLEXIGLAS ADD-ON, 12"H x 36"W	\$375
EC-GLAO-4212	PLEXIGLAS ADD-ON, 12"H x 42"W	\$435
EC-GLAO-412	PLEXIGLAS ADD-ON, 12"H x 48"W	\$495
EC-GLAO-512	PLEXIGLAS ADD-ON, 12"H x 60"W	\$505

Plexiglas Add-on Panel - 13" High

Catalog#	Description	Clear
EC-GLAO-213	PLEXIGLAS ADD-ON, 13"H x 24"W	\$325
EC-GLAO-3013	PLEXIGLAS ADD-ON, 13"H x 30"W	\$350
EC-GLAO-313	PLEXIGLAS ADD-ON, 13"H x 36"W	\$405
EC-GLAO-4213	PLEXIGLAS ADD-ON, 13"H x 42"W	\$460
EC-GLAO-413	PLEXIGLAS ADD-ON, 13"H x 48"W	\$520
EC-GLAO-513	PLEXIGLAS ADD-ON, 13"H x 60"W	\$555

Plexiglas Add-on Panel - 14" High

Catalog#	Description	Clear
EC-GLAO-214	PLEXIGLAS ADD-ON, 14"H x 24"W	\$325
EC-GLAO-3014	PLEXIGLAS ADD-ON, 14"H x 30"W	\$350
EC-GLAO-314	PLEXIGLAS ADD-ON, 14"H x 36"W	\$405
EC-GLAO-4214	PLEXIGLAS ADD-ON, 14"H x 42"W	\$460
EC-GLAO-414	PLEXIGLAS ADD-ON, 14"H x 48"W	\$520
EC-GLAO-514	PLEXIGLAS ADD-ON, 14"H x 60"W	\$555

Plexiglas Add-on Panel - 18" High

Catalog#	Description	Clear
EC-GLAO-218	PLEXIGLAS ADD-ON, 18"H x 24"W	\$340
EC-GLAO-3018	PLEXIGLAS ADD-ON, 18"H x 30"W	\$375
EC-GLAO-318	PLEXIGLAS ADD-ON, 18"H x 36"W	\$435
EC-GLAO-4218	PLEXIGLAS ADD-ON, 18"H x 42"W	\$490
EC-GLAO-418	PLEXIGLAS ADD-ON, 18"H x 48"W	\$555
EC-GLAO-518	PLEXIGLAS ADD-ON, 18"H x 60"W	\$565

Plexiglas Add-on Panel - 20" High

Catalog#	Description	Clear
EC-GLAO-220	PLEXIGLAS ADD-ON, 20"H x 24"W	\$360
EC-GLAO-3020	PLEXIGLAS ADD-ON, 20"H x 30"W	\$400
EC-GLAO-320	PLEXIGLAS ADD-ON, 20"H x 36"W	\$450
EC-GLAO-4220	PLEXIGLAS ADD-ON, 20"H x 42"W	\$505
EC-GLAO-420	PLEXIGLAS ADD-ON, 20"H x 48"W	\$575
EC-GLAO-520	PLEXIGLAS ADD-ON, 20"H x 60"W	\$595

Plexiglas Add-on Panel - 24" High

Catalog#	Description	Clear
EC-GLAO-224	PLEXIGLAS ADD-ON, 24"H x 24"W	\$370
EC-GLAO-3024	PLEXIGLAS ADD-ON, 24"H x 30"W	\$425
EC-GLAO-324	PLEXIGLAS ADD-ON, 24"H x 36"W	\$480
EC-GLAO-4224	PLEXIGLAS ADD-ON, 24"H x 42"W	\$540
EC-GLAO-424	PLEXIGLAS ADD-ON, 24"H x 48"W	\$610
EC-GLAO-524	PLEXIGLAS ADD-ON, 24"H x 60"W	\$645

To Order Specify:

- 1) Product Number
- 2) Plexiglas Color*
- 3) Paint Color*

Plexi Grade Pricing

Clear: No Upcharge
 Frosted: + 20% **
 ** Does not apply to Sliding Door

Paint Grade Pricing

Grade-A No Upcharge
 Grade-B + 50%

To Order Specify:

- 1) Product Number
- 2) Plexiglas Color*
- 3) Paint Color*

Plexi Grade Pricing

Clear: No Upcharge
 Frosted: + 20% **
 ** Does not apply to Sliding Door

Paint Grade Pricing

Grade-A No Upcharge
 Grade-B + 50%

*Swatches in this brochure are an approximation of the pattern and/or color, but may deviate from the final product due to variation in monitor/printer calibration. Please contact us for a physical swatch for an accurate fabric/paint/trim sample.

*Swatches in this brochure are an approximation of the pattern and/or color, but may deviate from the final product due to variation in monitor/printer calibration. Please contact us for a physical swatch for an accurate fabric/paint/trim sample.

Double Plexiglas Add-on Panel - 12" High		Catalog#	Description	Clear
		EC-GLAO-D-218	DOUBLE PLEXIGLAS ADD-ON, 18"H x 24"W	\$425
		EC-GLAO-D-3018	DOUBLE PLEXIGLAS ADD-ON, 18"H x 30"W	\$470
		EC-GLAO-D-318	DOUBLE PLEXIGLAS ADD-ON, 18"H x 36"W	\$545
		EC-GLAO-D-4218	DOUBLE PLEXIGLAS ADD-ON, 18"H x 42"W	\$615
		EC-GLAO-D-418	DOUBLE PLEXIGLAS ADD-ON, 18"H x 48"W	\$695
		EC-GLAO-D-518	DOUBLE PLEXIGLAS ADD-ON, 18"H x 60"W	\$710

Double Plexiglas Add-on Panel - 12" High		Catalog#	Description	Clear
		EC-GLAO-D-220	DOUBLE PLEXIGLAS ADD-ON, 18"H x 24"W	\$450
		EC-GLAO-D-3020	DOUBLE PLEXIGLAS ADD-ON, 18"H x 30"W	\$500
		EC-GLAO-D-320	DOUBLE PLEXIGLAS ADD-ON, 18"H x 36"W	\$565
		EC-GLAO-D-4220	DOUBLE PLEXIGLAS ADD-ON, 18"H x 42"W	\$635
		EC-GLAO-D-420	DOUBLE PLEXIGLAS ADD-ON, 18"H x 48"W	\$720
		EC-GLAO-D-520	DOUBLE PLEXIGLAS ADD-ON, 18"H x 60"W	\$745

Double Plexiglas Add-on Panel - 12" High		Catalog#	Description	Clear
		EC-GLAO-D-224	DOUBLE PLEXIGLAS ADD-ON, 18"H x 24"W	\$465
		EC-GLAO-D-3024	DOUBLE PLEXIGLAS ADD-ON, 18"H x 30"W	\$535
		EC-GLAO-D-324	DOUBLE PLEXIGLAS ADD-ON, 18"H x 36"W	\$600
		EC-GLAO-D-4224	DOUBLE PLEXIGLAS ADD-ON, 18"H x 42"W	\$675
		EC-GLAO-D-424	DOUBLE PLEXIGLAS ADD-ON, 18"H x 48"W	\$765
		EC-GLAO-D-524	DOUBLE PLEXIGLAS ADD-ON, 18"H x 60"W	\$810

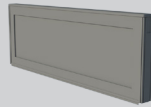


Fabric/Laminate Add-ons - 12" High		Catalog#	Description	Price
		EC-FLAO-212	FABRIC/LAMINATE ADD-ON, 12"H x 24"W	\$573
		EC-FLAO-3012	FABRIC/LAMINATE ADD-ON, 12"H x 30"W	\$591
		EC-FLAO-312	FABRIC/LAMINATE ADD-ON, 12"H x 36"W	\$616
		EC-FLAO-4212	FABRIC/LAMINATE ADD-ON, 12"H x 42"W	\$643
		EC-FLAO-412	FABRIC/LAMINATE ADD-ON, 12"H x 48"W	\$670
		EC-FLAO-512	FABRIC/LAMINATE ADD-ON, 12"H x 60"W	\$700

Fabric/Laminate Add-ons - 13" High		Catalog#	Description	Price
		EC-FLAO-213	FABRIC/LAMINATE ADD-ON, 13"H x 24"W	\$580
		EC-FLAO-3013	FABRIC/LAMINATE ADD-ON, 13"H x 30"W	\$605
		EC-FLAO-313	FABRIC/LAMINATE ADD-ON, 13"H x 36"W	\$630
		EC-FLAO-4213	FABRIC/LAMINATE ADD-ON, 13"H x 42"W	\$655
		EC-FLAO-413	FABRIC/LAMINATE ADD-ON, 13"H x 48"W	\$680
		EC-FLAO-513	FABRIC/LAMINATE ADD-ON, 13"H x 60"W	\$740

Fabric/Laminate Add-ons - 14" High		Catalog#	Description	Price
		EC-FLAO-214	FABRIC/LAMINATE ADD-ON, 14"H x 24"W	\$580
		EC-FLAO-3014	FABRIC/LAMINATE ADD-ON, 14"H x 30"W	\$605
		EC-FLAO-314	FABRIC/LAMINATE ADD-ON, 14"H x 36"W	\$630
		EC-FLAO-4214	FABRIC/LAMINATE ADD-ON, 14"H x 42"W	\$655
		EC-FLAO-414	FABRIC/LAMINATE ADD-ON, 14"H x 48"W	\$680
		EC-FLAO-514	FABRIC/LAMINATE ADD-ON, 14"H x 60"W	\$740

Fabric/Laminate Add-ons - 18" High		Catalog#	Description	Price
		EC-FLAO-218	FABRIC/LAMINATE ADD-ON, 18"H x 24"W	\$645
		EC-FLAO-3018	FABRIC/LAMINATE ADD-ON, 18"H x 30"W	\$680
		EC-FLAO-318	FABRIC/LAMINATE ADD-ON, 18"H x 36"W	\$695
		EC-FLAO-4218	FABRIC/LAMINATE ADD-ON, 18"H x 42"W	\$720
		EC-FLAO-418	FABRIC/LAMINATE ADD-ON, 18"H x 48"W	\$750
		EC-FLAO-518	FABRIC/LAMINATE ADD-ON, 18"H x 60"W	\$795



To Order Specify:
 1) Product Number
 2) Plexiglas Color*
 3) Paint Color*

Plexi Grade Pricing
 Clear: No Upcharge
 Frosted: + 20% **
 ** Does not apply to Sliding Door

Paint Grade Pricing
 Grade-A No Upcharge
 Grade-B + 50%

To Order Specify:
 1) Product Number
 2) Fabric/or Laminate Color*
 3) Paint Color*

Fabric Grade Pricing
 Grade A: No Upcharge
 Grade B: + 10%
 Grade C: + 20%
 Grade D: + 30%
 COM: - 10%

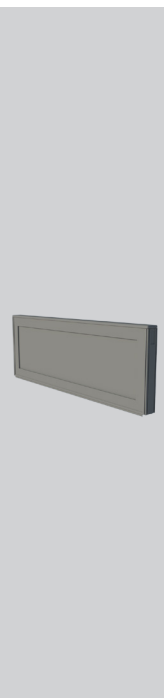
*Swatches in this brochure are an approximation of the pattern and/or color, but may deviate from the final product due to variation in monitor/printer calibration. Please contact us for a physical swatch for an accurate fabric/paint/trim sample.

Fabric/Laminate
Add-ons - 20" High

Catalog#	Description	Price
EC-FLAO-220	FABRIC/LAMINATE ADD-ON, 20"H x 24"W	\$650
EC-FLAO-3020	FABRIC/LAMINATE ADD-ON, 20"H x 30"W	\$700
EC-FLAO-320	FABRIC/LAMINATE ADD-ON, 20"H x 36"W	\$710
EC-FLAO-4220	FABRIC/LAMINATE ADD-ON, 20"H x 42"W	\$738
EC-FLAO-420	FABRIC/LAMINATE ADD-ON, 20"H x 48"W	\$760
EC-FLAO-520	FABRIC/LAMINATE ADD-ON, 20"H x 60"W	\$825

Fabric/Laminate
Add-ons - 24" High

Catalog#	Description	Price
EC-FLAO-224	FABRIC/LAMINATE ADD-ON, 24"H x 24"W	\$710
EC-FLAO-3024	FABRIC/LAMINATE ADD-ON, 24"H x 30"W	\$731
EC-FLAO-324	FABRIC/LAMINATE ADD-ON, 24"H x 36"W	\$760
EC-FLAO-4224	FABRIC/LAMINATE ADD-ON, 24"H x 42"W	\$800
EC-FLAO-424	FABRIC/LAMINATE ADD-ON, 24"H x 48"W	\$810
EC-FLAO-524	FABRIC/LAMINATE ADD-ON, 24"H x 60"W	\$835



Double Fabric/
Laminate
Add-ons - 18" High

Catalog#	Description	Price
EC-FLAO-D-218	DOUBLE FABRIC/LAMINATE ADD-ON, 18"H x 24"W	\$810
EC-FLAO-D-3018	DOUBLE FABRIC/LAMINATE ADD-ON, 18"H x 30"W	\$850
EC-FLAO-D-318	DOUBLE FABRIC/LAMINATE ADD-ON, 18"H x 36"W	\$870
EC-FLAO-D-4218	DOUBLE FABRIC/LAMINATE ADD-ON, 18"H x 42"W	\$940
EC-FLAO-D-418	DOUBLE FABRIC/LAMINATE ADD-ON, 18"H x 48"W	\$925
EC-FLAO-D-518	DOUBLE FABRIC/LAMINATE ADD-ON, 18"H x 60"W	\$995

Double Fabric/
Laminate
Add-ons - 18" High

Catalog#	Description	Price
EC-FLAO-D-220	DOUBLE FABRIC/LAMINATE ADD-ON, 20"H x 24"W	\$815
EC-FLAO-D-3020	DOUBLE FABRIC/LAMINATE ADD-ON, 20"H x 30"W	\$875
EC-FLAO-D-320	DOUBLE FABRIC/LAMINATE ADD-ON, 20"H x 36"W	\$890
EC-FLAO-D-4220	DOUBLE FABRIC/LAMINATE ADD-ON, 20"H x 42"W	\$950
EC-FLAO-D-420	DOUBLE FABRIC/LAMINATE ADD-ON, 20"H x 48"W	\$1000
EC-FLAO-D-520	DOUBLE FABRIC/LAMINATE ADD-ON, 20"H x 60"W	\$1035

Double Fabric/
Laminate
Add-ons - 18" High

Catalog#	Description	Price
EC-FLAO-D-224	DOUBLE FABRIC/LAMINATE ADD-ON, 24"H x 24"W	\$815
EC-FLAO-D-3024	DOUBLE FABRIC/LAMINATE ADD-ON, 24"H x 30"W	\$915
EC-FLAO-D-324	DOUBLE FABRIC/LAMINATE ADD-ON, 24"H x 36"W	\$950
EC-FLAO-D-4224	DOUBLE FABRIC/LAMINATE ADD-ON, 24"H x 42"W	\$1000
EC-FLAO-D-424	DOUBLE FABRIC/LAMINATE ADD-ON, 24"H x 48"W	\$1015
EC-FLAO-D-524	DOUBLE FABRIC/LAMINATE ADD-ON, 24"H x 60"W	\$1045



To Order Specify:

- 1) Product Number
- 2) Fabric/or Laminate Color*
- 3) Paint Color*

Fabric Grade Pricing

Grade A:	No Upcharge	Grade D:	+ 30%
Grade B:	+ 10%	COM:	- 10%
Grade C:	+ 20%		

To Order Specify:

- 1) Product Number
- 2) Fabric/or Laminate Color*
- 3) Paint Color*

Fabric Grade Pricing

Grade A:	No Upcharge	Grade D:	+ 30%
Grade B:	+ 10%	COM:	- 10%
Grade C:	+ 20%		

*Swatches in this brochure are an approximation of the pattern and/or color, but may deviate from the final product due to variation in monitor/printer calibration. Please contact us for a physical swatch for an accurate fabric/paint/trim sample.

Catalog#	Description	Price
EC-GL/FLAO-D-218	DOUBLE GLASS-FAB/LAM ADD-ON, 18"H x 24"W	\$510
EC-GL/FLAO-D-3018	DOUBLE GLASS-FAB/LAM ADD-ON, 18"H x 30"W	\$565
EC-GL/FLAO-D-318	DOUBLE GLASS-FAB/LAM ADD-ON, 18"H x 36"W	\$655
EC-GL/FLAO-D-4218	DOUBLE GLASS-FAB/LAM ADD-ON, 18"H x 42"W	\$735
EC-GL/FLAO-D-418	DOUBLE GLASS-FAB/LAM ADD-ON, 18"H x 48"W	\$835
EC-GL/FLAO-D-518	DOUBLE GLASS-FAB/LAM ADD-ON, 18"H x 60"W	\$850

Catalog#	Description	Price
EC-GL/FLAO-D-220	DOUBLE GLASS-FAB/LAM ADD-ON, 20"H x 24"W	\$540
EC-GL/FLAO-D-3020	DOUBLE GLASS-FAB/LAM ADD-ON, 20"H x 30"W	\$600
EC-GL/FLAO-D-320	DOUBLE GLASS-FAB/LAM ADD-ON, 20"H x 36"W	\$675
EC-GL/FLAO-D-4220	DOUBLE GLASS-FAB/LAM ADD-ON, 20"H x 42"W	\$760
EC-GL/FLAO-D-420	DOUBLE GLASS-FAB/LAM ADD-ON, 20"H x 48"W	\$865
EC-GL/FLAO-D-520	DOUBLE GLASS-FAB/LAM ADD-ON, 20"H x 60"W	\$895

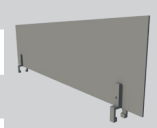
Catalog#	Description	Price
EC-GL/FLAO-D-224	DOUBLE GLASS-FAB/LAM ADD-ON, 24"H x 24"W	\$555
EC-GL/FLAO-D-3024	DOUBLE GLASS-FAB/LAM ADD-ON, 24"H x 30"W	\$640
EC-GL/FLAO-D-324	DOUBLE GLASS-FAB/LAM ADD-ON, 24"H x 36"W	\$720
EC-GL/FLAO-D-4224	DOUBLE GLASS-FAB/LAM ADD-ON, 24"H x 42"W	\$810
EC-GL/FLAO-D-424	DOUBLE GLASS-FAB/LAM ADD-ON, 24"H x 48"W	\$915
EC-GL/FLAO-D-524	DOUBLE GLASS-FAB/LAM ADD-ON, 24"H x 60"W	\$970



Catalog#	Description	CLEAR	FROSTED
EC-FRMGL-208	FRAMELESS GLASS ADD-ON, 8"H x 24"W	\$275	\$350
EC-FRMGL-3008	FRAMELESS GLASS ADD-ON, 8"H x 30"W	\$280	\$360
EC-FRMGL-308	FRAMELESS GLASS ADD-ON, 8"H x 36"W	\$285	\$370
EC-FRMGL-4208	FRAMELESS GLASS ADD-ON, 8"H x 42"W	\$290	\$380
EC-FRMGL-408	FRAMELESS GLASS ADD-ON, 8"H x 48"W	\$295	\$400
EC-FRMGL-508	FRAMELESS GLASS ADD-ON, 8"H x 60"W	\$355	\$480

Catalog#	Description	CLEAR	FROSTED
EC-FRMGL-212	FRAMELESS GLASS ADD-ON, 12"H x 24"W	\$280	\$355
EC-FRMGL-3012	FRAMELESS GLASS ADD-ON, 12"H x 30"W	\$285	\$375
EC-FRMGL-312	FRAMELESS GLASS ADD-ON, 12"H x 36"W	\$290	\$410
EC-FRMGL-4212	FRAMELESS GLASS ADD-ON, 12"H x 42"W	\$295	\$440
EC-FRMGL-412	FRAMELESS GLASS ADD-ON, 12"H x 48"W	\$300	\$475
EC-FRMGL-512	FRAMELESS GLASS ADD-ON, 12"H x 60"W	\$360	\$575

Catalog#	Description	CLEAR	FROSTED
EC-FRMGL-216	FRAMELESS GLASS ADD-ON, 16"H x 24"W	\$285	\$385
EC-FRMGL-3016	FRAMELESS GLASS ADD-ON, 16"H x 30"W	\$290	\$425
EC-FRMGL-316	FRAMELESS GLASS ADD-ON, 16"H x 36"W	\$295	\$470
EC-FRMGL-4216	FRAMELESS GLASS ADD-ON, 16"H x 42"W	\$300	\$510
EC-FRMGL-416	FRAMELESS GLASS ADD-ON, 16"H x 48"W	\$305	\$555
EC-FRMGL-516	FRAMELESS GLASS ADD-ON, 16"H x 60"W	\$365	\$675



To Order Specify:
 1) Product Number
 2) Plexiglas Color*
 3) Paint Color*

Plexi Grade Pricing
 Clear: No Upcharge
 Frosted: + 20% **
 ** Does not apply to Sliding Door

Paint Grade Pricing
 Grade-A No Upcharge
 Grade-B + 50%

To Order Specify:
 1) Product Number
 2) Paint Color*

*Swatches in this brochure are an approximation of the pattern and/or color, but may deviate from the final product due to variation in monitor/printer calibration. Please contact us for a physical swatch for an accurate fabric/paint/trim sample.

*Swatches in this brochure are an approximation of the pattern and/or color, but may deviate from the final product due to variation in monitor/printer calibration. Please contact us for a physical swatch for an accurate fabric/paint/trim sample.

Catalog#	Description	Price
EC-TMKT-30	T - MOUNT KIT, 30" H	\$60
EC-TMKT-37	T - MOUNT KIT, 37" H	\$60
EC-TMKT-44	T - MOUNT KIT, 44" H	\$65
EC-TMKT-50	T - MOUNT KIT, 50" H	\$70
EC-TMKT-56	T - MOUNT KIT, 56" H	\$75
EC-TMKT-64	T - MOUNT KIT, 64" H	\$80
EC-TMKT-68	T - MOUNT KIT, 68" H	\$80
EC-TMKT-82	T - MOUNT KIT, 82" H	\$100

Catalog#	Description	Price
EC-WMK-30	WALL MOUNT KIT, 30" H	\$54
EC-WMK-37	WALL MOUNT KIT, 37" H	\$55
EC-WMK-44	WALL MOUNT KIT, 44" H	\$60
EC-WMK-50	WALL MOUNT KIT, 50" H	\$70
EC-WMK-56	WALL MOUNT KIT, 56" H	\$75
EC-WMK-64	WALL MOUNT KIT, 64" H	\$85
EC-WMK-68	WALL MOUNT KIT, 68" H	\$90
EC-WMK-82	WALL MOUNT KIT, 82" H	\$110

Catalog#	Description	Price
EC-WT-26.5	WALL TRACK, 26.5" (PAIR)	\$65
EC-WT-60	WALL TRACK, 60" (PAIR)	\$125
EC-WT-72	WALL TRACK, 72" (PAIR)	\$150
EC-WT-84	WALL TRACK, 80" (PAIR)	\$170

Catalog#	Description	Price
EC-FPFC-30	FINISH POST, CURVED, FABRIC, 30" H	\$75
EC-FPFC-37	FINISH POST, CURVED, FABRIC, 37" H	\$100
EC-FPFC-44	FINISH POST, CURVED, FABRIC, 44" H	\$100
EC-FPFC-50	FINISH POST, CURVED, FABRIC, 50" H	\$110
EC-FPFC-56	FINISH POST, CURVED, FABRIC, 56" H	\$110
EC-FPFC-64	FINISH POST, CURVED, FABRIC, 64" H	\$115
EC-FPFC-68	FINISH POST, CURVED, FABRIC, 68" H	\$120
EC-FPFC-82	FINISH POST, CURVED, FABRIC, 82" H	\$175

Catalog#	Description	Price
EC-FPFS-30	FINISH POST, STRAIGHT, FABRIC, 30" H	\$70
EC-FPFS-37	FINISH POST, STRAIGHT, FABRIC, 37" H	\$70
EC-FPFS-44	FINISH POST, STRAIGHT, FABRIC, 44" H	\$70
EC-FPFS-50	FINISH POST, STRAIGHT, FABRIC, 50" H	\$80
EC-FPFS-56	FINISH POST, STRAIGHT, FABRIC, 56" H	\$80
EC-FPFS-64	FINISH POST, STRAIGHT, FABRIC, 64" H	\$80
EC-FPFS-68	FINISH POST, STRAIGHT, FABRIC, 68" H	\$85
EC-FPFS-82	FINISH POST, STRAIGHT, FABRIC, 82" H	\$90

To Order Specify:

- 1) Product Number
- 2) Paint Color*

To Order Specify:

- 1) Product Number
- 2) Fabric Color*
- 3) Paint Color*

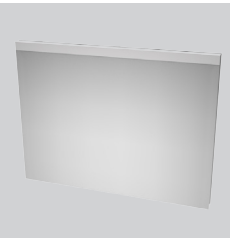
Fabric Grade Pricing

Grade A:	No Upcharge	Grade D:	+ 30%
Grade B:	+ 10%	COM:	- 10%
Grade C:	+ 20%		

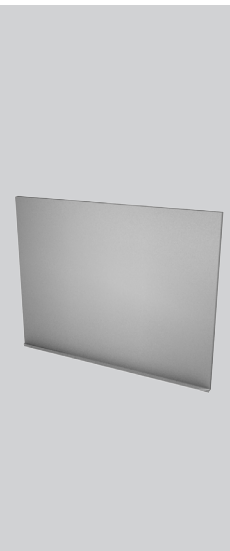
*Swatches in this brochure are an approximation of the pattern and/or color, but may deviate from the final product due to variation in monitor/printer calibration. Please contact us for a physical swatch for an accurate fabric/paint/trim sample.

*Swatches in this brochure are an approximation of the pattern and/or color, but may deviate from the final product due to variation in monitor/printer calibration. Please contact us for a physical swatch for an accurate fabric/paint/trim sample.


Wainscott Kit	Catalog#	Description	Price
	EC-WNSCT-130	WAINSCOT KITS, 30" H X 12" W	\$395
	EC-WNSCT-230	WAINSCOT KITS, 30" H X 24" W	\$435
	EC-WNSCT-3030	WAINSCOT KITS, 30" H X 30" W	\$465
	EC-WNSCT-330	WAINSCOT KITS, 30" H X 36" W	\$485



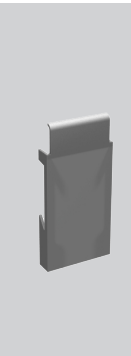
Marker Boards	Catalog#	Description	Price
	EC-HNAM-3023	MARKER BOARD, 23" H X 30" W	\$350
	EC-HNAM-3623	MARKER BOARD, 23" H X 36" W	\$410
	EC-HNAM-4223	MARKER BOARD, 23" H X 42" W	\$430
	EC-HNAM-4823	MARKER BOARD, 23" H X 48" W	\$455
	EC-HNAM-6023	MARKER BOARD, 23" H X 60" W	\$540
	EC-HNAM-6048	MARKER BOARD, 48" H X 60" W	\$625



Cable Management	Catalog#	Description	Price
	EC-HP-CMP-144	POWERBASE 144" CABLE MANAGEMENT POLE	\$250
	EC-HP-CMP-90	POWERBASE 90" CABLE MANAGEMENT POLE	\$195
	EC-CMP-GLAO	POWERBASE 120" CABLE MANAGEMENT POLE	\$800
	EC-CMP-GLAO-EOR	POWERBASE 120" END OF RUN CABLE MANAGEMENT POLE	\$800




Base Trim Pieces	Catalog#	Description	Price
	EC-EC-1	BASE END CAP	\$5
	EC-FPFC-BP	FINISH POST, 90 DEGREE CURVED BASEPLATE	\$35
	EC-FPFS-BP	FINISH POST, 180 DEGREE STRAIGHT BASE-PLATE	\$35
	EC-FPFS-TC	FISNISH POST, 180 DEGREE STRAIGHT TOPCAP	\$35
	EC-PCC-180-1	CONNECTOR COVER, 3-Way, POWER 4"	\$28
	EC-PCC-90-1	CONNECTOR COVER, 2-Way, POWER 4"	\$28




To Order Specify:
 1) Product Number
 2) Paint Color*
 3) Vinyl Edge Trim Color (Marker Boards Only)

*Swatches in this brochure are an approximation of the pattern and/or color, but may deviate from the final product due to variation in monitor/printer calibration. Please contact us for a physical swatch for an accurate fabric/paint/trim sample.


Wire Management	Catalog#	Description	Price
	EC-WC-17	WIRE CHANEL, 17"	\$20
	EC-WC-20	WIRE CHANEL, 20"	\$20



Data Ports & Plates	Catalog#	Description	Price
	EC-DATA-PLATE-DOUBLE-5E	DOUBLE DATA PLATE, CAT 5E CONNECTOR	\$150
	EC-DATA-PLATE-DOUBLE-6	DOUBLE DATA PLATE, CAT 6 CONNECTOR	\$200
	EC-DATA-PLATE-SINGLE-5E	SINGLE DATA PLATE, CAT 5E CONNECTOR	\$100
	EC-DATA-PLATE-SINGLE-6	SINGLE DATA PLATE, CAT 6 CONNECTOR	\$125
	EC-DATA-PORT-UPGRADE	DATA PORT UPGRADE TO BASEPLATE	\$50
	EC-CUST-DATA-PORT-UPGRADE	CUSTOM DATA PORT UPGRADE TO BASEPLATE	\$50



Desktop Power and Data Mod-	Catalog#	Description	Price
	EC-INTERACT-JR	2 POWER, 2 DATA, 72" MOLD-ED PLUG MODULE	\$425



Electrical Receptacles	Catalog#	Description	Price
	EC-PRD-3-1	RECEPTACLE, DUPLEX	\$35
	EC-PRDI-5-1	IGR DUPLEX (1 RECEPTACLE)	\$40

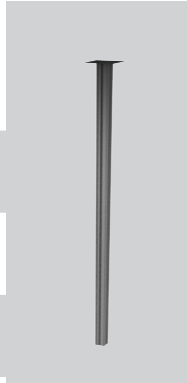


To Order Specify:
 1) Product Number
 2) Paint Color*

*Swatches in this brochure are an approximation of the pattern and/or color, but may deviate from the final product due to variation in monitor/printer calibration. Please contact us for a physical swatch for an accurate fabric/paint/trim sample.

Electrical
Top Feeds

Catalog#	Description	Price
EC-HP-TFM-14	TOP FEED MODULE, 90" POLE, 168" WIRE	\$1160
EC-HP-TFM-12-14	TOP FEED MODULE, 144" POLE, 168" WIRE	\$1500
EC-TFM-GLA0	GLAO TOP FEED MODULE 120" POLE, 168" WIRE	\$1500
EC-TFM-GLAO-EOR	END OF RUN GLAO TOP FEED MODULE 120" POLE, 168" WIRE	\$1500



Electrical
Base Feeds

Catalog#	Description	Price
EC-BFM-1	POWERBASE BASE FEED MODULE	\$420



Electrical - Panel to
Panel Connector

Catalog#	Description	Price
EC-PCF-3	POWER CONNECTOR, FLEXIBLE	\$145

** Each panel is shipped with one flex connector. order only if additional is needed.



Electrical - 3 or
4-Way Connector

Catalog#	Description	Price
EC-PCSS-3	POWER CONNECTOR, STRAIGHT SPAN	\$195

** Continues power along a straight panel run intersected by non-powered panels



Electrical - 1'
Panel Connector

Catalog#	Description	Price
EC-PCOF-3	PASS THROUGH POWER STRIP, 12"	\$150



To Order Specify:
1) Product Number
2) Paint Color (HP-TFM only)*

*Swatches in this brochure are an approximation of the pattern and/or color, but may deviate from the final product due to variation in monitor/printer callibration. Please contact us for a physical swatch for an accurate fabric/paint/trim sample.



Surfaces

Worksurfaces	1
Rectangle Tops	2
Corner Tops	4
D Tops	7
Custom Tops	7
Tables	8
CounterTops	9
Worksurface Accessories	10
Support Panels	10
Support Columns	11
Support Legs	11
Mounting Kits	11
Cantilevers	12
Accessories	12

Echo Systems offers unlimited worksurface options. All of our surfaces are produced from wood components, low VOC adhesives, top quality laminates, and are trimmed in a 3/16" high pressure decorative T mold edge.



Echo Surfaces



Worksurfaces

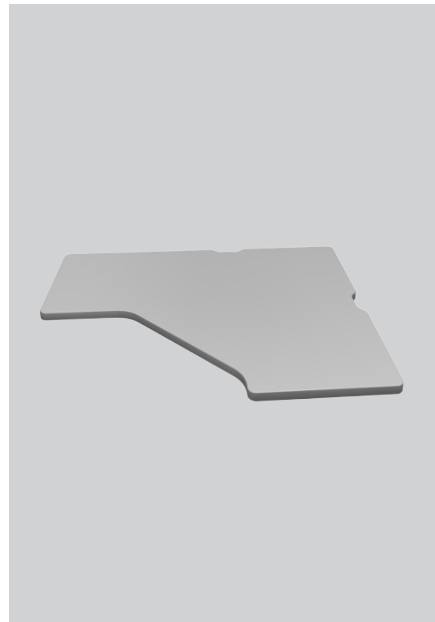
To Order, Specify:

- 1) Product Number
- 2) Laminate Color*
- 3) Trim Color*
- 4) Echo Standard Dimension or TT**

** Work surfaces will default to Echo standard dimensions unless noted TT on an order.

Cantilevers Sold Separately

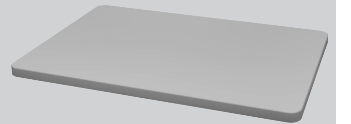
Laminate Grade Pricing
 Grade A: No Upcharge
 Grade B: + 10%
 COM: -10%



*Swatches in this brochure are an approximation of the pattern and/or color, but may deviate from the final product due to variation in monitor/printer calibration. Please contact us for a physical swatch for an accurate fabric/paint/trim sample.

Worksurface
Rectangle

Catalog#	Description	Price
EC-WS-220-T	WORKSURFACE, 20"D x 24"W	\$120
EC-WS-224-T	WORKSURFACE, 24"D x 24"W	\$125
EC-WS-230-T	WORKSURFACE, 30"D x 24"W	\$175
EC-WS-3020-T	WORKSURFACE, 20"D x 30"W	\$140
EC-WS-3024-T	WORKSURFACE, 24"D x 30"W	\$145
EC-WS-3030-T	WORKSURFACE, 30"D x 30"W	\$190
EC-WS-320-T	WORKSURFACE, 20"D x 36"W	\$165
EC-WS-324-T	WORKSURFACE, 24"D x 36"W	\$165
EC-WS-330-T	WORKSURFACE, 30"D x 36"W	\$205
EC-WS-4220-T	WORKSURFACE, 20"D x 42"W	\$180
EC-WS-4224-T	WORKSURFACE, 24"D x 42"W	\$190
EC-WS-4230-T	WORKSURFACE, 30"D x 42"W	\$230
EC-WS-420-T	WORKSURFACE, 20"D x 48"W	\$190
EC-WS-424-T	WORKSURFACE, 24"D x 48"W	\$195
EC-WS-430-T	WORKSURFACE, 30"D x 48"W	\$255
EC-WS-520-T	WORKSURFACE, 20"D x 60"W	\$225
EC-WS-524-T	WORKSURFACE, 24"D x 60"W	\$230
EC-WS-530-T	WORKSURFACE, 30"D x 60"W	\$305
EC-WS-620-T	WORKSURFACE, 20"D x 72"W	\$315
EC-WS-624-T	WORKSURFACE, 24"D x 72"W	\$365
EC-WS-630-T	WORKSURFACE, 30"D x 72"W	\$380
EC-WS-6624-T	WORKSURFACE, 24"D x 66"W	\$320
EC-WS-6630-T	WORKSURFACE, 30"D x 66"W	\$352
EC-WS-724-T	WORKSURFACE, 24"D x 84"W	\$425
EC-WS-730-T	WORKSURFACE, 30"D x 84"W	\$440
EC-WS-820-T	WORKSURFACE, 20"D x 96"W	\$385
EC-WS-824-T	WORKSURFACE, 24"D x 96"W	\$425
EC-WS-830-T	WORKSURFACE, 30"D x 96"W	\$440



To Order Specify:

- 1) Product Number
- 2) Laminate Surface Color*
- 3) Vinyl Edge Trim Color*

Laminate Pricing

Grade A: No Upcharge
 Grade B: + 10%
 COM: - 10%

*Swatches in this brochure are an approximation of the pattern and/or color, but may deviate from the final product due to variation in monitor/printer calibration. Please contact us for a physical swatch for an accurate fabric/paint/trim sample.

Worksurface - Rectangle
Notched in Center Rear

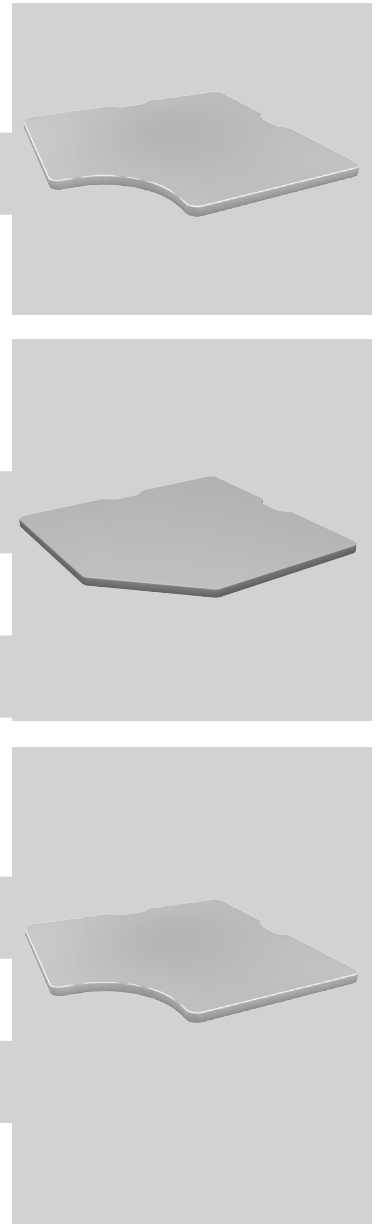
Catalog#	Description	Price
EC-WSN-3024-T	WORKSURFACE, 24"D x 30"W, NOTCHED	\$165
EC-WSN-3030-T	WORKSURFACE, 30"D x 30"W, NOTCHED	\$190
EC-WSN-324-T	WORKSURFACE, 24"D x 36"W, NOTCHED	\$180
EC-WSN-330-T	WORKSURFACE, 30"D x 36"W, NOTCHED	\$220
EC-WSN-4224-T	WORKSURFACE, 24"D x 42"W, NOTCHED	\$195
EC-WSN-4230-T	WORKSURFACE, 30"D x 42"W, NOTCHED	\$225
EC-WSN-424-T	WORKSURFACE, 24"D x 48"W, NOTCHED	\$215
EC-WSN-430-T	WORKSURFACE, 30"D x 48"W, NOTCHED	\$245
EC-WSN-524-T	WORKSURFACE, 24"D x 60"W, NOTCHED	\$295
EC-WSN-530-T	WORKSURFACE, 30"D x 60"W, NOTCHED	\$340
EC-WSN-624-T	WORKSURFACE, 24"D x 72"W, NOTCHED	\$355
EC-WSN-630-T	WORKSURFACE, 30"D x 72"W, NOTCHED	\$385
EC-WSN-6624-T	WORKSURFACE, 24"D x 66"W, NOTCHED	\$430
EC-WSN-6630-T	WORKSURFACE, 30"D x 66"W, NOTCHED	\$450
EC-WSN-724-T	WORKSURFACE, 24"D x 84"W, NOTCHED	\$445
EC-WSN-730-T	WORKSURFACE, 30"D x 84"W, NOTCHED	\$470



Worksurface
Corner

Catalog#	Description	Price
EC-WRCN-424-T	CORNER WORKSURFACE, 24"D x 48"W, NOTCHED	\$325
EC-WRCN-430-T	CORNER WORKSURFACE, 30"D x 48"W, NOTCHED	\$400
EC-WRCN-524-T	WORKSURFACE, 24"D x 60"W, NOTCHED	\$425

Catalog#	Description	Price
EC-WRCS-324-T	WORKSURFACE, 24"D x 36"W, NOTCHED	\$250
EC-WRCS-4224-T	WORKSURFACE, 24"D x 42"W, NOTCHED	\$325
EC-WRCS-4230-T	WORKSURFACE, 30"D x 42"W, NOTCHED	\$330
EC-WRCS-430-T	WORKSURFACE, 30"D x 48"W, NOTCHED	\$400



Worksurface - Corner
Curved Wrap Around

Catalog#	Description	Price
EC-WASC-324-T	CORNER WRAP-AROUND, 24" D X 36" W, NOTCHED	\$250
EC-WASC-4224-T	CORNER WRAP-AROUND, 24" D X 42" W, NOTCHED	\$325
EC-WASC-424-T	CORNER WRAP-AROUND, 24" D X 48" W, NOTCHED	\$325
EC-WASC-430-T	CORNER WRAP-AROUND, 30" D X 48" W, NOTCHED	\$400
EC-WASC-524-T	CORNER WRAP-AROUND, 24" D X 60" W, NOTCHED	\$425

To Order Specify:

- 1) Product Number
- 2) Laminate Surface Color*
- 3) Vinyl Edge Trim Color*

- 4) Echo Standard Dimension or TT**
- ** Work surfaces will default to Echo standard dimensions unless noted TT on an order.
Cantilevers Sold Separately

Laminate Pricing

- Grade A: No Upcharge
Grade B: + 10%
COM: - 10%

*Swatches in this brochure are an approximation of the pattern and/or color, but may deviate from the final product due to variation in monitor/printer calibration. Please contact us for a physical swatch for an accurate fabric/paint/trim sample.

To Order Specify:

- 1) Product Number
- 2) Laminate Surface Color*
- 3) Vinyl Edge Trim Color*

- 4) Echo Standard Dimension or TT**
- ** Work surfaces will default to Echo standard dimensions unless noted TT on an order.
Cantilevers Sold Separately

Laminate Pricing

- Grade A: No Upcharge
Grade B: + 10%
COM: - 10%

*Swatches in this brochure are an approximation of the pattern and/or color, but may deviate from the final product due to variation in monitor/printer calibration. Please contact us for a physical swatch for an accurate fabric/paint/trim sample.

Catalog#	Description	Price
EC-WY-34-2424-T	EXTENDED CORNER, 36"L x 48"R X 24"D	\$315
EC-WY-35-2424-T	EXTENDED CORNER, 36"L x 60"R X 24"D	\$375
EC-WY-36-2424-T	EXTENDED CORNER, 36"L x 72"R X 30"D	\$415
EC-WY-43-2424-T	EXTENDED CORNER, 48"L x 36"R X 24"D	\$315
EC-WY-45-2424-T	EXTENDED CORNER, 48"L x 60"R X 24"D	\$390
EC-WY-46-2424-T	EXTENDED CORNER, 48"L x 72"R X 24"D	\$450
EC-WY-53-2424-T	EXTENDED CORNER, 60"L x 36"R X 24"D	\$375
EC-WY-54-2424-T	EXTENDED CORNER, 60"L x 48"R X 24"D	\$390
EC-WY-63-2424-T	EXTENDED CORNER, 72"L x 36"R X 30"D	\$415
EC-WY-64-2424-T	EXTENDED CORNER, 72"L x 48"R X 24"D	\$450

Catalog#	Description	Price
EC-WY-34-3030-T	EXTENDED CORNER, 36"L x 48"R X 30"D	\$405
EC-WY-35-3030-T	EXTENDED CORNER, 36"L x 60"R X 30"D	\$490
EC-WY-43-3030-T	EXTENDED CORNER, 48"L x 36"R X 30"D	\$405
EC-WY-45-3030-T	EXTENDED CORNER, 48"L x 60"R X 30"D	\$485
EC-WY-46-3030-T	EXTENDED CORNER, 48"L x 72"R X 30"D	\$575
EC-WY-53-3030-T	EXTENDED CORNER, 60"L x 36"R X 30"D	\$490
EC-WY-54-3030-T	EXTENDED CORNER, 60"L x 48"R X 30"D	\$485
EC-WY-64-3030-T	EXTENDED CORNER, 72"L x 48"R X 30"D	\$575

Catalog#	Description	Price
EC-WYC-34-2424-T	EXTENDED CORNER, 36"L x 48"R X 24"D	\$315
EC-WYC-35-2424-T	EXTENDED CORNER, 36"L x 60"R X 24"D	\$375
EC-WYC-36-2424-T	EXTENDED CORNER, 36"L x 72"R X 24"D	\$415
EC-WYC-43-2424-T	EXTENDED CORNER, 48"L x 36"R X 24"D	\$315
EC-WYC-45-2424-T	EXTENDED CORNER, 48"L x 60"R X 24"D	\$390
EC-WYC-46-2424-T	EXTENDED CORNER, 48"L x 72"R X 24"D	\$450
EC-WYC-53-2424-T	EXTENDED CORNER, 60"L x 36"R X 24"D	\$375
EC-WYC-54-2424-T	EXTENDED CORNER, 60"L x 48"R X 24"D	\$390
EC-WYC-63-2424-T	EXTENDED CORNER, 72"L x 36"R X 24"D	\$415
EC-WYC-64-2424-T	EXTENDED CORNER, 72"L x 48"R X 24"D	\$450
EC-WYC-45-3030-T	EXTENDED CORNER, 48"L x 60"R X 30"D	\$485
EC-WYC-46-3030-T	EXTENDED CORNER, 48"L x 72"R X 30"D	\$575
EC-WYC-54-3030-T	EXTENDED CORNER, 60"L x 48"R X 30"D	\$485
EC-WYC-64-3030-T	EXTENDED CORNER, 72"L x 48"R X 30"D	\$575

Catalog#	Description	Price
EC-WWET-4623-L-T	CURVED WRAP AROUND EXTENDED TRANSITIONAL TOP, 48" L X 72" R X 24" D/30" D, LEFT	\$757
EC-WWET-4623-R-T	CURVED WRAP AROUND EXTENDED TRANSITIONAL TOP, 48" L X 72" R X 24" D/30" D, RIGHT	\$757
EC-WWET-4632-L-T	CURVED WRAP AROUND EXTENDED TRANSITIONAL TOP, 48" L X 72" R X 30" D/24" D, LEFT	\$757
EC-WWET-4632-R-T	CURVED WRAP AROUND EXTENDED TRANSITIONAL TOP, 48" L X 72" R X 30" D/24" D, RIGHT	\$757

Catalog#	Description	Price
EC-WWLC-4823-T	CURVED WRAP AROUND CORNER TOP, 48" W X 24"/30" D	\$395
EC-WWLC-4832-T	CURVED WRAP AROUND CORNER TOP, 48" W X 30"/24" D	\$395

Catalog#	Description	Price
EC-WUDZ-2426-T	120 DEGREE CORNER LINK, 24" D X 36" W, NOTCHED	\$250
EC-WUCZ-3636-T	120 DEGREE CORNER, 24" D X 42" W, NOTCHED	\$410
EC-WUCZ-4242-T	120 DEGREE CORNER, 24" D X 48" W, NOTCHED	\$480
EC-WUCZ-4848-T	120 DEGREE CORNER, 30" D X 48" W, NOTCHED	\$550
EC-WUCZ-6060-T	120 DEGREE CORNER, 24" D X 60" W, NOTCHED	\$700

To Order Specify:

- 1) Product Number
- 2) Laminate Surface Color*
- 3) Vinyl Edge Trim Color*

- 4) Echo Standard Dimension or TT**
- ** Work surfaces will default to Echo standard dimensions unless noted TT on an order.
Cantilevers Sold Separately

Laminate Pricing

- Grade A: No Upcharge
Grade B: + 10%
COM: - 10%

*Swatches in this brochure are an approximation of the pattern and/or color, but may deviate from the final product due to variation in monitor/printer calibration. Please contact us for a physical swatch for an accurate fabric/paint/trim sample.

To Order Specify:

- 1) Product Number
- 2) Laminate Surface Color*
- 3) Vinyl Edge Trim Color*

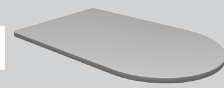
- 4) Echo Standard Dimension or TT**
- ** Work surfaces will default to Echo standard dimensions unless noted TT on an order.
Cantilevers Sold Separately

Laminate Pricing

- Grade A: No Upcharge
Grade B: + 10%
COM: - 10%

*Swatches in this brochure are an approximation of the pattern and/or color, but may deviate from the final product due to variation in monitor/printer calibration. Please contact us for a physical swatch for an accurate fabric/paint/trim sample.

Worksurface D Top	Catalog#	Description	Price
	EC-DWST-3050-T	D-SHAPED TOP, 50"D x 30"W	\$240
	EC-DWST-430-T	D-SHAPED TOP, 30"D x 48"W	\$214
	EC-DWST-530-T	D-SHAPED TOP, 30"D x 60"W	\$245
	EC-DWST-536-T	D-SHAPED TOP, 36"D x 60"W	\$260
	EC-DWST-630-T	D-SHAPED TOP, 30"D x 72"W	\$315
	EC-DWST-636-T	D-SHAPED TOP, 36"D x 72"W	\$427



Worksurface - Wrap Around D Shaped Top	Catalog#	Description	Price
	EC-WDWL-4524-L	WRAP AROUND D-SHAPED TOP, 24"D x 48"W x 60"L, LEFT	\$485
	EC-WDWL-4524-R	WRAP AROUND D-SHAPED TOP, 24"D x 48"W x 60"L, RIGHT	\$485
	EC-WDWL-4624-L	WRAP AROUND D-SHAPED TOP, 24"D x 48"W x 72"L, LEFT	\$608
	EC-WDWL-4624-R	WRAP AROUND D-SHAPED TOP, 24"D x 48"W x 60"L, RIGHT	\$608



Worksurface Custom	Catalog#	Description	Price
	EC-CUST-TOP-424-T	CUSTOM WORKSURFACE, 24"D X 48"W	\$240
	EC-CUST-TOP-430-T	CUSTOM WORKSURFACE, 30"D X 48"W	\$300
	EC-CUST-TOP-448-T	CUSTOM WORKSURFACE, 48"D X 48"W	\$480
	EC-CUST-TOP-560-T	CUSTOM WORKSURFACE, 60"D X 60"W	\$750
	EC-CUST-TOP-624-T	CUSTOM WORKSURFACE, 24"D X 72"W	\$360
	EC-CUST-TOP-630-T	CUSTOM WORKSURFACE, 30"D X 72"W	\$450
	EC-CUST-TOP-648-T	CUSTOM WORKSURFACE, 48"D X 72"W	\$720
	EC-CUST-TOP-824-T	CUSTOM WORKSURFACE, 24"D X 96"W	\$480
	EC-CUST-TOP-830-T	CUSTOM WORKSURFACE, 30"D X 96"W	\$600
	EC-CUST-TOP-848-T	CUSTOM WORKSURFACE, 48"D X 96"W	\$960
	EC-CUST-TOP-1060-T	CUSTOM WORKSURFACE, 60"D X 120"W	\$1,500



To Order Specify:

- 1) Product Number
- 2) Laminate Surface Color*
- 3) Vinyl Edge Trim Color*
- 4) Echo Standard Dimension or TT**

** Work surfaces will default to Echo standard dimensions unless noted TT on an order.
Cantilevers Sold Separately

Laminate Pricing

Grade A: No Upcharge
Grade B: + 10%
COM: - 10%

*Swatches in this brochure are an approximation of the pattern and/or color, but may deviate from the final product due to variation in monitor/printer calibration. Please contact us for a physical swatch for an accurate fabric/paint/trim sample.

Oval Tables	Catalog#	Description	Price
	EC-TPCO-3060	OVAL TABLE 60"D X 30"W	\$680
	EC-TPCO-3072	OVAL TABLE 72"D X 30"W	\$775
	EC-TPCO-3660	OVAL TABLE 60"D X 36"W	\$810
	EC-TPCO-3672	OVAL TABLE 72"D X 36"W	\$860



Round Tables	Catalog#	Description	Price
	EC-TPR-30	ROUND TABLE 30"	\$405
	EC-TPR-36	ROUND TABLE 36"	\$470
	EC-TPR-42	ROUND TABLE 42"	\$610
	EC-TPR-48	ROUND TABLE 48"	\$695



Square Tables	Catalog#	Description	Price
	EC-TPS-2424	SQUARE TABLE 24"	\$448
	EC-TPS-3030	SQUARE TABLE 30"	\$450
	EC-TPS-3636	SQUARE TABLE 36"	\$680



To Order Specify:

- 1) Product Number
- 2) Laminate Surface Color*
- 3) Vinyl Edge Trim Color*
- 4) Echo Standard Dimension or TT**

** Work surfaces will default to Echo standard dimensions unless noted TT on an order.
Table Bases available in BLACK ONLY.

Laminate Pricing

Grade A: No Upcharge
Grade B: + 10%
COM: - 10%

*Swatches in this brochure are an approximation of the pattern and/or color, but may deviate from the final product due to variation in monitor/printer calibration. Please contact us for a physical swatch for an accurate fabric/paint/trim sample.

Catalog#	Description	Price
EC-CTRE-2415	COUNTER TOP, RIGHT-ANGLE, 15"D x 24"W	\$338
EC-CTRE-315	COUNTER TOP, RIGHT-ANGLE, 15"D x 24"W	\$530
EC-CTRE-4215	COUNTER TOP, RIGHT-ANGLE, 15"D x 24"W	\$630
EC-CTRE-4815	COUNTER TOP, RIGHT-ANGLE, 15"D x 48"W	\$730

Catalog#	Description	Price
EC-CTSE-215	COUNTER TOP, RECTANGLE, 15"D x 24"W	\$198
EC-CTSE-3015	COUNTER TOP, RECTANGLE, 15"D x 30"W	\$212
EC-CTSE-315	COUNTER TOP, RECTANGLE, 15"D x 36"W	\$221
EC-CTSE-4215	COUNTER TOP, RECTANGLE, 15"D x 48"W	\$230
EC-CTSE-415	COUNTER TOP, RECTANGLE, 15"D x 42"W	\$234
EC-CTSE-515	COUNTER TOP, RECTANGLE, 15"D x 60"W	\$248
EC-CTSE-615	COUNTER TOP, RECTANGLE, 15"D x 72"W	\$300

*** Includes countertop brackets.

Catalog#	Description	Price
EC-WSP-2429-L	WORKSURFACE, SUPPORT PANEL, 24" D X 29" H, LEFT	\$285
EC-WSP-2429-R	WORKSURFACE, SUPPORT PANEL, 24" D X 29" H, RIGHT	\$285
EC-WSP-3029-L	WORKSURFACE, SUPPORT PANEL, 30" D X 29" H, LEFT	\$310
EC-WSP-3029-R	WORKSURFACE, SUPPORT PANEL, 30" D X 29" H, RIGHT	\$310

Catalog#	Description	Price
EC-DSSP-DL-1029	WORKSURFACE, DESKSIDE SUPPORT PANEL, DOUBLE LAMINATE, 10"D X 29"H	\$185
EC-DSSP-DL-2029	WORKSURFACE, DESKSIDE SUPPORT PANEL, DOUBLE LAMINATE, 20"D X 29"H	\$226
EC-DSSP-DL-2429	WORKSURFACE, DESKSIDE SUPPORT PANEL, DOUBLE LAMINATE, 24"D X 29"H	\$244
EC-DSSP-DL-3029	WORKSURFACE, DESKSIDE SUPPORT PANEL, DOUBLE LAMINATE, 30"D X 29"H	\$268
EC-DSSP-DL-3629	WORKSURFACE, DESKSIDE SUPPORT PANEL, DOUBLE LAMINATE, 36"D X 29"H	\$295
EC-DSSP-DL-4229	WORKSURFACE, DESKSIDE SUPPORT PANEL, DOUBLE LAMINATE, 42"D X 29"H	\$321
EC-MP-DL-4829	WORKSURFACE, MODESTY PANEL, DOUBLE LAMINATE, 48"W X 29"H	\$400
EC-MP-DL-6029	WORKSURFACE, MODESTY PANEL, DOUBLE LAMINATE, 60"W X 29"H	\$457
EC-MP-DL-7229	WORKSURFACE, MODESTY PANEL, DOUBLE LAMINATE, 72"W X 29"H	\$516
EC-CUST-DSSP-248	WORKSURFACE, DESKSIDE SUPPORT PANEL, CUSTOM 24"D X 48"H	\$300
EC-CUST-DSSP-848	WORKSURFACE, DESKSIDE SUPPORT PANEL, CUSTOM 96"D X 48"H	\$1,200

To Order Specify:

- 1) Product Number
- 2) Laminate Surface Color*
- 3) Vinyl Edge Trim Color*
- 4) Echo Standard Dimension or TT**

Laminate Pricing

- Grade A: No Upcharge
- Grade B: + 10%
- COM: - 10%

*Swatches in this brochure are an approximation of the pattern and/or color, but may deviate from the final product due to variation in monitor/printer calibration. Please contact us for a physical swatch for an accurate fabric/paint/trim sample.

To Order Specify:


- 1) Product Number
- 2) Laminate Surface Color*
- 3) Vinyl Edge Trim Color*
- 4) Echo Standard Dimension or TT**

Laminate Pricing


- Grade A: No Upcharge
- Grade B: + 10%
- COM: - 10%

*Swatches in this brochure are an approximation of the pattern and/or color, but may deviate from the final product due to variation in monitor/printer calibration. Please contact us for a physical swatch for an accurate fabric/paint/trim sample.

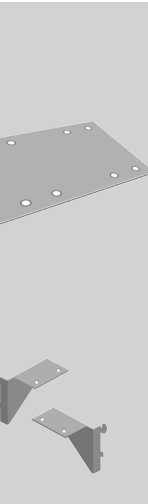
Support Column, Bases

Catalog#	Description	Price	
EC-CL-18	SUPPORT COLUMN, 18" C-LEG	\$375	
EC-HCC-1	4" SUPPORT COLUMN, SINGLE LEG	\$166	
EC-PL-27	2" SUPPORT COLUMN, SINGLE LEG	\$145	
EC-SQ-RH	2" SQUARE, SINGLE LEG	\$235	

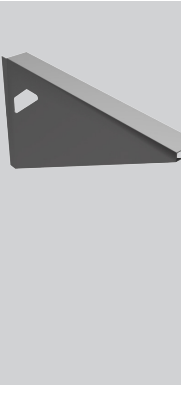
Support Legs

Catalog#	Description	Price	
EC-RSSB-24	24" SQUARE SUPPORT LEG	\$545	
EC-RSSB-30	30" SQUARE SUPPORT LEG	\$615	
EC-RSSB-24-SHD	24" SQUARE SHARED SUPPORT LEG	\$595	
EC-RSSB-30-SHD	30" SQUARE SHARED SUPPORT LEG	\$665	
EC-RSHL-24	24" H-SHAPE SUPPORT LEG	\$545	
EC-RSHL-30	30" H-SHAPE SUPPORT LEG	\$615	
EC-RSHL-24-SHD	24" H-SHAPE SHARED SUPPORT LEG	\$595	
EC-RSHL-30-SHD	30" H-SHAPE SHARED SUPPORT LEG	\$665	

Mounting Brackets, Worksurface Support

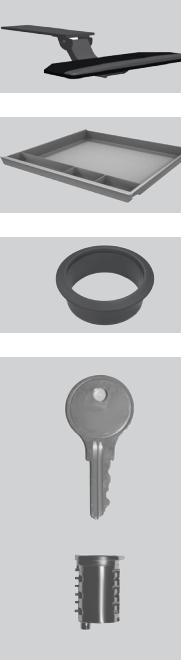
Catalog#	Description	Price	
EC-CB	CORNER BRACKET	\$15	
EC-DMK-1	MOUNTING KIT, DROP MOUNT (Pair)	\$30	
EC-L-BRACKET	BRACKET, L	\$2	
EC-FMK-1	MOUNTING KIT, FLUSH MOUNT (set of 2)	\$30	
EC-PMK-1	MOUNTING KIT, PANEL MOUNT	\$35	
EC-SMK-1	MOUNTING KIT, SIDE MOUNT (Pair)	\$30	
EC-SPCLT-BAR	WORKSURFACE SUPPORT BAR	\$135	

Cantilevers

Catalog#	Description	Price	
EC-JUS-CANT-L-CH**	LEFT CANTILEVER, CHARCOAL	\$45	
EC-JUS-CANT-R-CH**	RIGHT CANTILEVER, CHARCOAL	\$45	
EC-JUS-CANT-SHD-CL**	SHARED LEFT CANTILEVER, CHARCOAL	\$55	
EC-JUS-CANT-SHD-CR**	SHARED RIGHT CANTILEVER, CHARCOAL	\$55	

** Charcoal Only

Accessories

Catalog#	Description	Price	
EC-AKP-ESI**	ARTICULATING KEYBOARD TRAY	\$465	
EC-DS-3-GR-C**	PENCIL DRAWER-NEW GENERIC	\$60	
EC-WSG-1**	GROMMET	\$30	
EC-Z-BRACKET	TACKBOARD Z BRACKET, 48" (PAIR)	\$125	
EC-KEYALIKE-1	KEYALIKE, SET OF 1-KEYALIKE & PLUG	\$16	
EC-KEYALIKE-2	KEYALIKE, SET OF 2-KEYALIKE & PLUG	\$32	
EC-KEYALIKE-3	KEYALIKE, SET OF 3-KEYALIKE & PLUG	\$48	
EC-KEYALIKE-4	KEYALIKE, SET OF 4-KEYALIKE & PLUG	\$64	
EC-KEYALIKE-5	KEYALIKE, SET OF 5-KEYALIKE & PLUG	\$80	
EC-KEYALIKE-6	KEYALIKE, SET OF 6-KEYALIKE & PLUG	\$96	
EC-KEYALIKE-7	KEYALIKE, SET OF 7-KEYALIKE & PLUG	\$112	
EC-KEYALIKE-8	KEYALIKE, SET OF 8-KEYALIKE & PLUG	\$128	
EC-KEYALIKE-9	KEYALIKE, SET OF 9-KEYALIKE & PLUG	\$144	
EC-KEYALIKE-10	KEYALIKE, SET OF 10-KEYALIKE & PLUG	\$160	

** Charcoal only

To Order Specify:

- 1) Product Number
- 2) Paint Color*

*Swatches in this brochure are an approximation of the pattern and/or color, but may deviate from the final product due to variation in monitor/printer calibration. Please contact us for a physical swatch for an accurate fabric/paint/trim sample.

To Order Specify:

- 1) Product Number
- 2) Paint Color*

*Swatches in this brochure are an approximation of the pattern and/or color, but may deviate from the final product due to variation in monitor/printer calibration. Please contact us for a physical swatch for an accurate fabric/paint/trim sample.



Accessories

Shelves	2
Regular Shelf	2
Low Shelf	2
Flipper Doors - Fabric	3
Flipper Doors - Laminate	3
Tasklights	3
Top Mounted Shelves	4
Work Surface Dividers	4
Tackboards	5
Pedestals	6
Lateral Files	6

Echo Systems offers numerous overhead, storage, task lighting, tackboard, and filing options. Flipper Doors are available in Fabric or Laminate.



Echo Accessories



Shelf Regular Shelf

Catalog#	Description	Price
EC-SR-2	REGULAR SHELF, 13 5/8"D X 24"W	\$140
EC-SR-30	REGULAR SHELF, 13 5/8"D X 30"W	\$145
EC-SR-3	REGULAR SHELF, 13 5/8"D X 36"W	\$150
EC-SR-42	REGULAR SHELF, 13 5/8"D X 42"W	\$155
EC-SR-4	REGULAR SHELF, 13 5/8"D X 48"W	\$160
EC-SR-5	REGULAR SHELF, 13 5/8"D X 60"W	\$175

Shelf Assembly Low Shelf

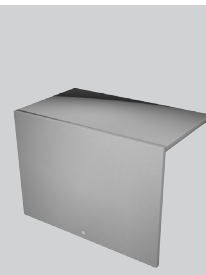
Catalog#	Description	Price
EC-SL-2	LOW SHELF, 13 5/8"D X 24"W	\$140
EC-SL-30	LOW SHELF, 13 5/8"D X 30"W	\$140
EC-SL-3	LOW SHELF, 13 5/8"D X 36"W	\$150
EC-SL-42	LOW SHELF, 13 5/8"D X 42"W	\$150
EC-SL-4	LOW SHELF, 13 5/8"D X 48"W	\$150
EC-SL-5	LOW SHELF, 13 5/8"D X 60"W	\$165



To Order Specify:
 1) Product Number
 2) Paint & Trim Color*

*Swatches in this brochure are an approximation of the pattern and/or color, but may deviate from the final product due to variation in monitor/printer calibration. Please contact us for a physical swatch for an accurate fabric/paint/trim sample.

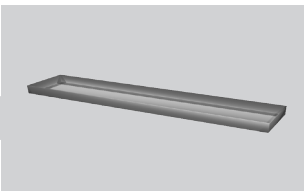
Catalog#	Description	Price
EC-FDRF-2	FLIPPER DOOR, REG DEPTH, FABRIC, 24"W	\$240
EC-FDRF-30	FLIPPER DOOR, REG DEPTH, FABRIC, 30"W	\$250
EC-FDRF-3	FLIPPER DOOR, REG DEPTH, FABRIC, 36"W	\$270
EC-FDRF-42	FLIPPER DOOR, REG DEPTH, FABRIC, 42"W	\$310
EC-FDRF-4	FLIPPER DOOR, REG DEPTH, FABRIC, 48"W	\$310
EC-FDRF-5	FLIPPER DOOR, REG DEPTH, FABRIC, 60"W	\$380
** For use with regular shelf assemblies.		
To Order Specify:		Fabric Grade Pricing
1) Product Number	Grade A:	No Upcharge
2) Fabric Color*	Grade B:	+ 10%
3) Paint & Trim Color*	Grade C:	+ 20%
	Grade D:	+ 30%
	COM:	- 10%



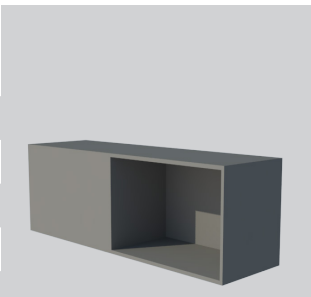
Catalog#	Description	Price
EC-FDRL-2	FLIPPER DOOR, REG DEPTH, LAMINATE, 24"W	\$360
EC-FDRL-30	FLIPPER DOOR, REG DEPTH, LAMINATE, 30"W	\$375
EC-FDRL-3	FLIPPER DOOR, REG DEPTH, LAMINATE, 36"W	\$405
EC-FDRL-42	FLIPPER DOOR, REG DEPTH, LAMINATE, 42"W	\$465
EC-FDRL-4	FLIPPER DOOR, REG DEPTH, LAMINATE, 48"W	\$495
EC-FDRL-5	FLIPPER DOOR, REG DEPTH, LAMINATE, 60"W	\$570
** For use with regular shelf assemblies.		
To Order Specify:		Laminate Grade Pricing
1) Product Number	Grade A:	No Upcharge
2) Laminate Color*	Grade B:	+ 10%
3) Paint & Trim Color*	COM:	- 10%



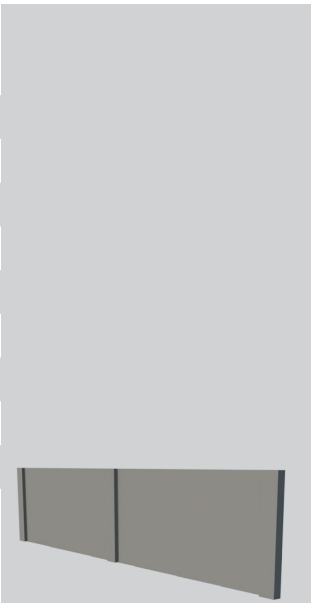
Catalog#	Description	Price
EC-HP-TL-3-OR-SMALLER	TASKLIGHT, 30"W	\$100
EC-HP-TL-42-OR-LARGER	TASKLIGHT, 42"W	\$135



Catalog#	Description	Price
EC-SLF-36-M	36" UPMOUNT SHELF WITH MARKERBOARD	\$930
EC-SLF-36-TB	36" UPMOUNT SHELF WITH TACKBOARD	\$930
EC-SLF-42-M	42" UPMOUNT SHELF WITH MARKERBOARD	\$1045
EC-SLF-42-TB	42" UPMOUNT SHELF WITH TACKBOARD	\$1045
EC-SLF-48-M	48" UPMOUNT SHELF WITH MARKERBOARD	\$1165
EC-SLF-48-TB	48" UPMOUNT SHELF WITH TACKBOARD	\$1165
EC-SLF-60-M	60" UPMOUNT SHELF WITH MARKERBOARD	\$1395
EC-SLF-60-TB	60" UPMOUNT SHELF WITH TACKBOARD	\$1395



Catalog#	Description	Price
EC-DIV-1811	11"H x 18"W SURFACE MOUNTED DIVIDER	\$150
EC-DIV-2411	11"H x 24"W SURFACE MOUNTED DIVIDER	\$165
EC-DIV-3011	11"H x 30"W SURFACE MOUNTED DIVIDER	\$175
EC-DIV-3611	11"H x 36"W SURFACE MOUNTED DIVIDER	\$190
EC-DIV-4211	11"H x 42"W SURFACE MOUNTED DIVIDER	\$205
EC-DIV-4811	11"H x 48"W SURFACE MOUNTED DIVIDER	\$250
EC-DIV-6011	11"H x 60"W SURFACE MOUNTED DIVIDER	\$280
EC-DIV-7211	11"H x 72"W SURFACE MOUNTED DIVIDER	\$305
EC-DIV-8411	11"H x 84"W SURFACE MOUNTED DIVIDER	\$365
EC-DIV-9611	11"H x 96"W SURFACE MOUNTED DIVIDER	\$395



Catalog#	Description	Price
EC-DIV-1817	17"H x 18"W SURFACE MOUNTED DIVIDER	\$200
EC-DIV-2417	17"H x 24"W SURFACE MOUNTED DIVIDER	\$225
EC-DIV-3017	17"H x 30"W SURFACE MOUNTED DIVIDER	\$250
EC-DIV-3617	17"H x 36"W SURFACE MOUNTED DIVIDER	\$265
EC-DIV-4217	17"H x 42"W SURFACE MOUNTED DIVIDER	\$290
EC-DIV-4817	17"H x 48"W SURFACE MOUNTED DIVIDER	\$360
EC-DIV-6017	17"H x 60"W SURFACE MOUNTED DIVIDER	\$410
EC-DIV-7217	17"H x 72"W SURFACE MOUNTED DIVIDER	\$450
EC-DIV-8417	17"H x 84"W SURFACE MOUNTED DIVIDER	\$545
EC-DIV-9617	17"H x 96"W SURFACE MOUNTED DIVIDER	\$590



To Order Specify:

1) Product Number	Fabric Grade Pricing		
2) Fabric Color*	Grade A:	No Upcharge	Grade C: + 20%
	Grade B:	+ 10%	Grade D: + 30%

To Order Specify:

1) Product Number	Divider Grade Pricing
2) Paint/Trim Color*	Grade A Paint: No Upcharge
3) Plexi Color (Dividers Only)	Grade B Paint: 50% Upcharge

*Swatches in this brochure are an approximation of the pattern and/or color, but may deviate from the final product due to variation in monitor/printer callibration. Please contact us for a physical swatch for an accurate fabric/paint/trim sample.

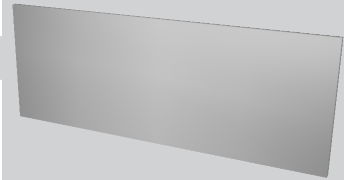
*Swatches in this brochure are an approximation of the pattern and/or color, but may deviate from the final product due to variation in monitor/printer callibration. Please contact us for a physical swatch for an accurate fabric/paint/trim sample.

Tackstrip - 5" H	Catalog#	Description	Price
	EC-TB-2405	TACKBOARD, 5"H x 24"W	\$110
	EC-TB-3005	TACKBOARD, 5"H x 30"W	\$110
	EC-TB-3605	TACKBOARD, 5"H x 36"W	\$115
	EC-TB-4205	TACKBOARD, 5"H x 42"W	\$120
	EC-TB-4805	TACKBOARD, 5"H x 48"W	\$125
	EC-TB-6005	TACKBOARD, 5"H x 60"W	\$145

Tackstrip - 11" H	Catalog#	Description	Price
	EC-TB-2411	TACKBOARD, 11"H x 24"W	\$120
	EC-TB-3011	TACKBOARD, 11"H x 30"W	\$120
	EC-TB-3611	TACKBOARD, 11"H x 36"W	\$125
	EC-TB-4211	TACKBOARD, 11"H x 42"W	\$130
	EC-TB-4811	TACKBOARD, 11"H x 48"W	\$145
	EC-TB-6011	TACKBOARD, 11"H x 60"W	\$170

Tackstrip - 16" H	Catalog#	Description	Price
	EC-TB-2416	TACKBOARD, 16"H x 24"W	\$130
	EC-TB-3016	TACKBOARD, 16"H x 30"W	\$135
	EC-TB-3616	TACKBOARD, 16"H x 36"W	\$140
	EC-TB-4216	TACKBOARD, 16"H x 42"W	\$155
	EC-TB-4816	TACKBOARD, 16"H x 48"W	\$155
	EC-TB-6016	TACKBOARD, 16"H x 60"W	\$180

Tackstrip - 33" H	Catalog#	Description	Price
	EC-TB-2433	TACKBOARD, 33"H x 24"W	\$190
	EC-TB-3033	TACKBOARD, 33"H x 30"W	\$195
	EC-TB-3633	TACKBOARD, 33"H x 36"W	\$200
	EC-TB-4233	TACKBOARD, 33"H x 42"W	\$210
	EC-TB-4833	TACKBOARD, 33"H x 48"W	\$220
	EC-TB-6033	TACKBOARD, 33"H x 60"W	\$260



Pedestals	Catalog#	Description	Price
	EC-HP-1212-FPED	PEDESTAL, 12", FILE/FILE	\$475
	EC-HP-6612-FPED	PEDESTAL, 6", DRAWER / DRAWER / 12" FILE	\$500

Mobile Pedestals	Catalog#	Description	Price
	EC-HP-612-MPED	PEDESTAL, MOBILE, 6" DRAWER / 12" FILE	\$500
	EC-HP-612-MPED-C	PEDESTAL, MOBILE, 6" DRAWER / 12" FILE, WITH CUSHION	\$800

Lateral Files	Catalog#	Description	Price
	EC-HP-LF-230	LATERAL FILE, 2 DRAWER 30" WIDE, NO TOP	\$750
	EC-HP-LF-536	LATERAL FILE, 5 DRAWER 36" WIDE	\$1,750

To Order Specify:
 1) Product Number
 2) Fabric Color*

Fabric Grade Pricing	
Grade A:	No Upcharge
Grade B:	+ 10%
Grade C:	+ 20%
Grade D:	+ 30%

To Order Specify:
 1) Product Number
 2) Fabric Color* (EC-HP-612-MPED-C only)
 3) Paint Color*

*Swatches in this brochure are an approximation of the pattern and/or color, but may deviate from the final product due to variation in monitor/printer calibration. Please contact us for a physical swatch for an accurate fabric/paint/trim sample.

*Swatches in this brochure are an approximation of the pattern and/or color, but may deviate from the final product due to variation in monitor/printer calibration. Please contact us for a physical swatch for an accurate fabric/paint/trim sample.



235 SOUTH 56TH STREET
CHANDLER, AZ 85226

PHONE: 800-280-5000 FAX: 480-894-1907